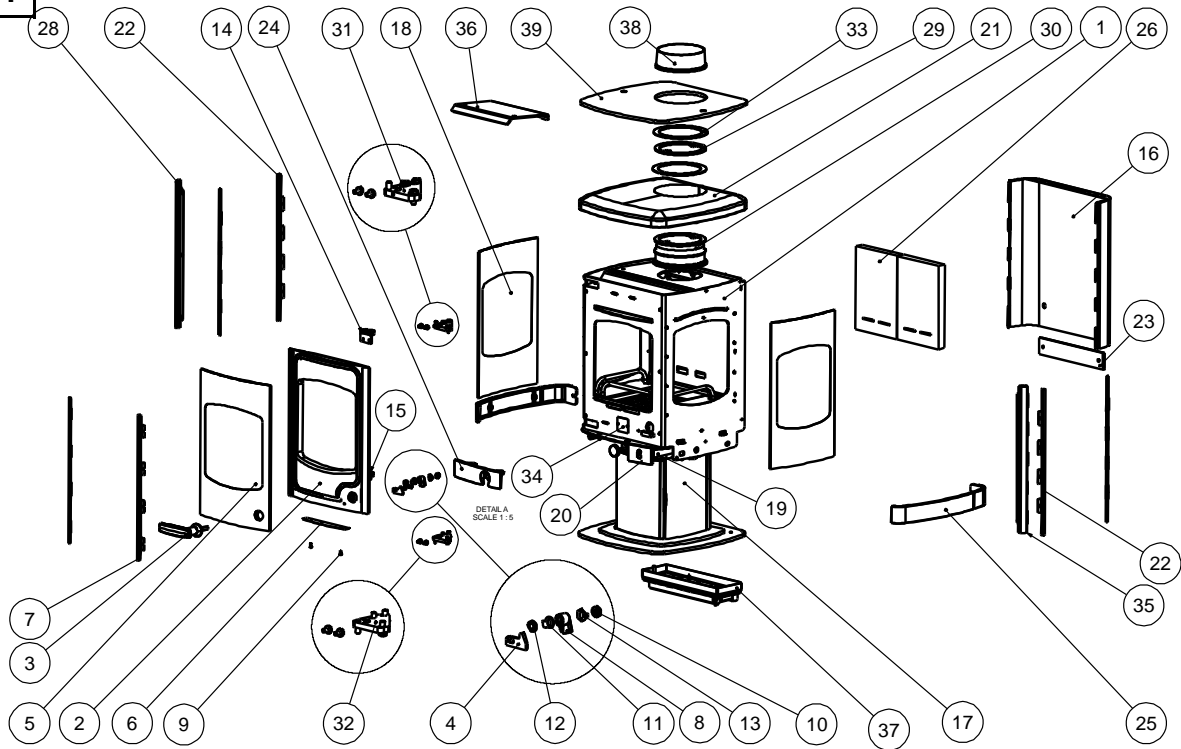




Issue H



Item	Part No.	Description	Ex.Vat.	Inc.Vat.	Item	Part No.	Description	Ex.Vat.	Inc.Vat.
1	001/KS010	KS Firebox			22#	004/KS030	Glazing Bar	10.40	12.48
2#	002/KS001/A	Door Assembly	365.00	438.00	23#	010/KS075	Rear Skirt	21.50	25.80
3	008/KS011/A	Handle Assembly	27.00	32.40	24#	002/KS120	Front Collar	33.00	39.60
4	010/KS014	Handle Locking Stop	4.20	5.04	25#	002/KS121	Side Skirt	43.00	51.60
5	006/KS018	Glass Front Panel	235.00	282.00	26	011/KS131	Firebrick	32.00	38.40
6	004/KS064	Glass Support	9.10	10.92	27	004/ES04/04	Glass Side Bracket	2.30	2.76
7#	004/KS066	Front Glass Retainer	10.40	12.48	28#	004/KS008	L.H. Upright Trim	23.00	27.60
8	002/AY14	Latch	8.30	9.96	29	010/KS095	Flue Ring	225.00	270.00
9	008/FFS042	M5x10 Skt Hd Cap Screw	0.15	0.18	30	010/KS094	KS Adaptor Assy	45.00	54.00
10	008/FFN001	M12 Half Nut	0.16	0.19	31	010/KS002	Hinge Plate Assy Top	14.00	16.80
11	004/KS063	Handle Stop	1.50	1.80	32	010/KS004	Hinge Plate Assy Lower	14.00	16.80
12	008/FFW015	M12 Double Coil Spring Washer	1.70	2.04	33	008/KS134	Sealing Gasket (Flue)	3.00	3.60
13	004/ST008	Tabbed Locking Washer	1.10	1.32	34	012/KS015	Serial No Label		
14	010/KS005	Upper Hinge	14.00	16.80	35	004/KS007	R.H. Upright Trim	23.00	27.60
15	010/KS003	Lower Hinge	14.00	16.80	36	010/KS031	Throat Plate	37.00	44.40
16#	004/KS006	Rear Cover Assy	74.00	88.80	37	010/KS041	Airslide Control Assembly		
17#	010/KS039	Base Assy			38#	002/CH12B	Flue Collar	58.00	69.60
18	006/KS019	Glass (Side Panel)	205.00	246.00	39#	010/KS127	Top Plate	46.50	55.80
19	010/KS133	Riddler Handle Arm	22.50	27.00	40	008/KS135	Door Seal Kit	24.00	28.80
20	008/ES15/01	Riddler Handle	10.80	12.96	41	008/ES137	Glass Seal Kit	10.90	13.08
21	008/KS009	Soapstone Top Plate	230.00	276.00					

* These items are not shown on the drawing
 ## Please specify colour when ordering
 Prices are shown in pounds sterling with vat at 20%
 They are correct at the date shown but may be subject to change without notice. E. & O.E
 These prices are subject to a carriage charge.

To obtain spare parts please contact your local stockist giving Model, Part No. and Description. In case of difficulty contact the manufacturer at the address shown.
 This drawing is for identification purposes only.

