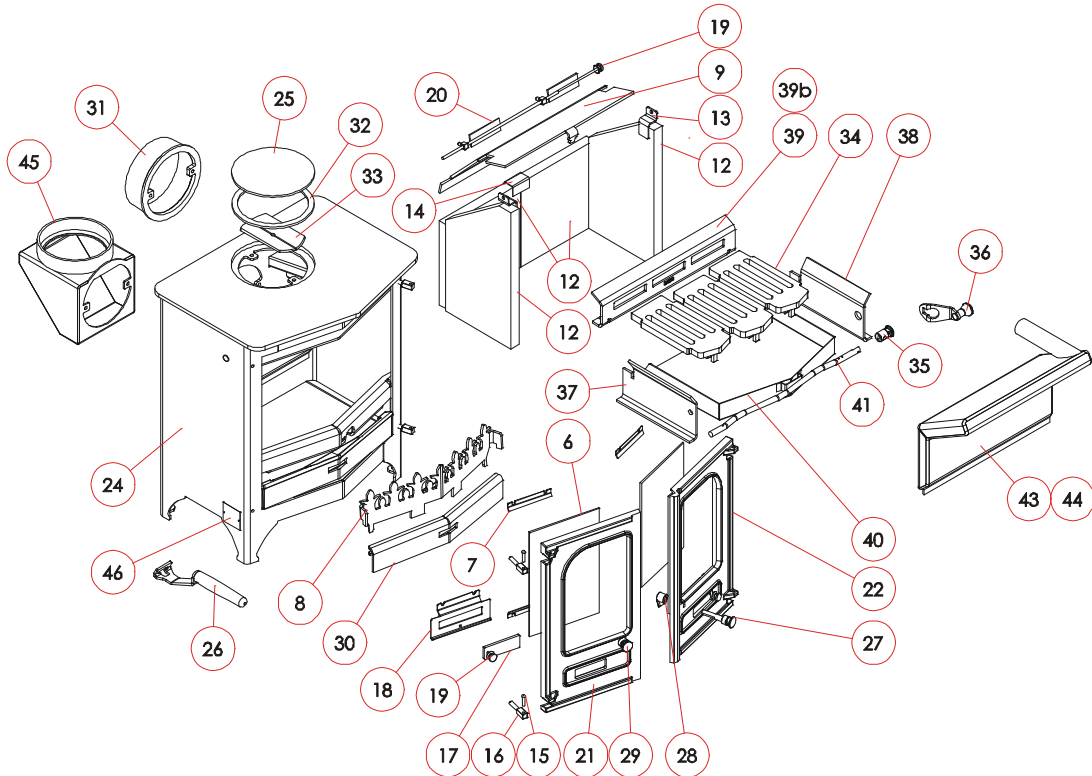


## Parts List



Item	Part No.	Description	Ex.Vat.	Inc.Vat.	Item	Part No.	Description	Ex.Vat.	Inc.Vat.
3*	008/LV35/S	Door Seal Set Incl. Adhesive .....	22.70	26.67	39b	010/DY06B	Rear Grate Sup't Plate (Use with boiler)	20.00	23.50
4*	008/FW29	Door Seal Adhesive .....	6.75	7.93	40#	004/DY17	Ashpan .....	46.45	54.58
5*	008/GV44S	Glass Channel (set of 8)			41#	010/DY13	Riddler Rod .....	20.85	24.50
6	006/LW30	Glass (Inc Channel) .....	31.05	36.48	42*	008/DY23	Riddler Rod Retaining Clips (pack of 10)	7.70	9.05
7	004/GV23	Glass Retainer .....	2.50	2.94	42a	010/DY20	Multi Fuel Kit (Optional Extra) .....	145.00	170.38
8	010/DY08	Fuel Retainer .....	37.30	43.83	43	010/TW50	Boiler, Steel (Optional Extra) .....	121.00	142.18
9	010/DY31	Throat Plate .....	41.65	48.94	44	010/TW50/SS	Boiler, Stainless Steel (Optional Extra) ..	223.00	262.03
12	011/GV28S	Set of Fire Bricks .....	50.85	59.75	45	010/TW33	Vert. Rear Flue Connector (Opt'l Extra)	66.00	77.55
13	004/GV27	Brick Retainer .....	3.80	4.47	46	012/GV11	Serial No. Label		
14	004/GV24	Rear Brick Joining Bracket .....	3.10	3.64	47*	010/EW51	Ash Carrier (Optional Extra) .....	64.00	75.20
15	008/BW39/S	Hinge Pin Set .....	2.30	2.70					
16	008/FW27	Hinge Post .....	4.30	5.05					
17	012/TW14	Primary Air Slide .....	14.80	17.39					
18	004/DY26	Primary Air Slide Guide .....	9.70	11.40					
19	002/TW13	Air Control Knob .....	11.25	13.22					
20	004/TW48	Airwash Slide .....	17.75	20.86					
21	002/GV01	Left Hand Door .....	57.30	67.33					
22	002/GV02	Right Hand Door .....	57.30	67.33					
23	010/TW55	Flue collar for Cast Pipe (Opt'l Extra) ...	43.35	50.94					
24	001/DY10	Firebox (Country 6 MkII) .....	318.25	373.94					
25	012/TW09	Blanking Plate .....	14.80	17.39					
26	012/BV20/A	Ashpan / Door Opening Tool .....	16.05	18.86					
27	002/DY18	R.H. Door Knob & Spindle .....	12.75	14.98					
28	002/AY14	Door Catch Cam .....	6.40	7.52					
29	002/DY19	Left Hand Door Knob .....	9.20	10.81					
30	010/DY14	Wood Ash Retainer .....	30.20	35.49					
31	002/CH12B	Flue Collar .....	43.35	50.94					
32	010/NV11	Flue Spacer Ring .....	11.45	13.45					
33	010/AY51	Clamping Plate .....	11.70	13.75					
34#	002/DY03	Grate Plate .....	20.55	24.15					
35#	002/DY21	Riddler Knob .....	13.40	15.75					
36#	008/DY27	Riddling Tool .....	8.85	10.40					
37#	010/DY05L	Side Grate Support Plate L.H. ....	20.00	23.50					
38#	010/DY05R	Side Grate Support Plate R.H. ....	20.00	23.50					
39#	010/DY06	Rear Grate Support Plate .....	20.00	23.50					

\* These items are not shown on the drawing.

# These items are included in the optional multi-fuel kit.

Prices are shown in pounds sterling with vat at 17.5%

They are correct at the date shown but may be subject to change without notice. E. & O.E

These prices are subject to a carriage charge.



To obtain spare parts please contact your local stockist giving Model, Part No. and Description. In case of difficulty contact the manufacturer at the address shown.

This drawing is for identification purposes only.

**CHARNWOOD** Bishops Way, Newport, Isle of Wight PO30 5WS, United Kingdom

T:+44 (0)1983 537799

F:+44 (0)1983 537788

charnwood@ajwells.co.uk

www.charnwood.com