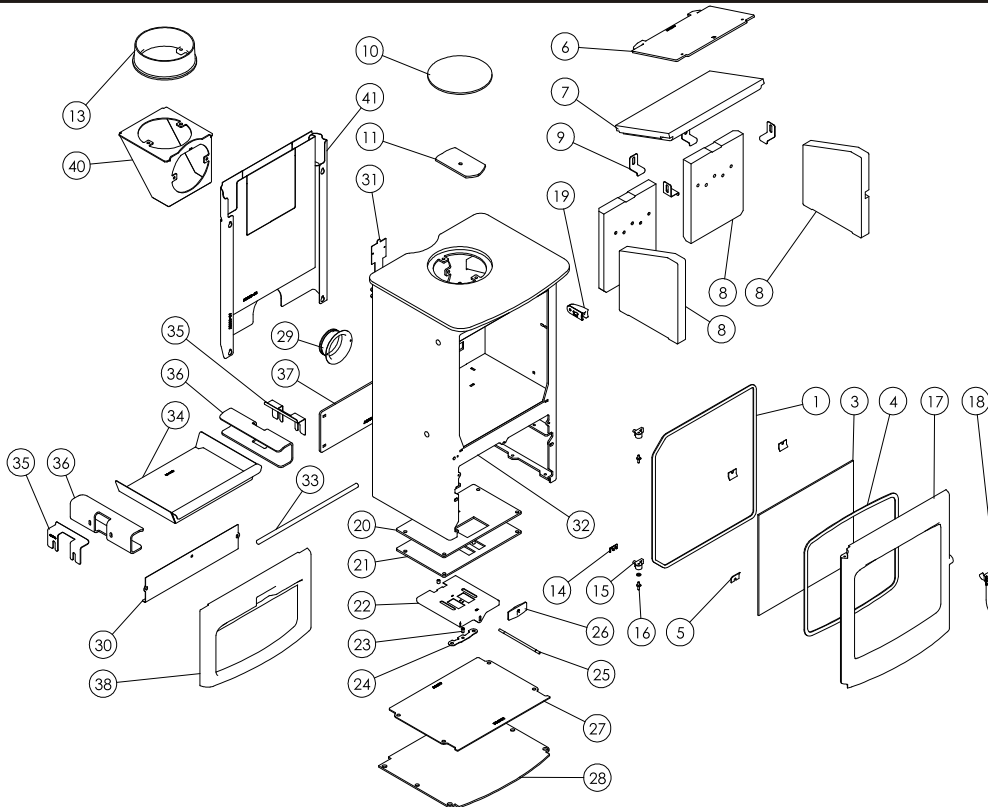




Issue B



Item	Part No.	Description	Ex.Vat.	Inc.Vat.	Item	Part No.	Description	Ex.Vat.	Inc.Vat.
1	008/AB035	Rope Door Seal	11.50	13.80	22	004/AB115	Slider	11.50	13.80
2	008/FW29	Door Seal Adhesive	9.10	10.92	23	008/ES36/01	Brass Ball Catch	3.70	4.44
3	006/AB018	Glass (Inc Seal)	48.00	57.60	24	004/BR015	Clicker Retainer Plate	2.90	3.48
4	008/AY45	Glass Seal	10.40	12.48	25	004/BR016	Control Rod	14.80	17.76
5	004/KV23	Glass Retainer	0.57	0.68	26	008/EZ105	Air Control Handle	9.10	10.92
6	010/AB045	Upper Throat Plate	27.00	32.40	27	010/AB077	Base Cover Plate	27.00	32.40
7	011/AB031	Throat Plate	30.90	37.08	28#	010/AB043	Store Stand Baseplate	34.20	41.04
8	011/AB028S	Set of Fire Bricks	56.50	67.80	29	004/CR048	Air Inlet Spigot	10.80	12.96
9	004/XV30	Brick Bracket	6.10	7.32	30	004/AB057	Airbox Cover	8.50	10.20
10	012/TW09	Blanking Plate	19.90	23.88	31	012/AB011	Serial No. Label		
11	010/AY51	Clamping Plate	15.80	18.96	32#	001/AB010	Firebox		
12*	008/NV38	Flue Fixing Rope Seal	6.20	7.44	33	010/AB007	Front Fence Bar	5.10	6.12
13#	002/CH12B	Flue Collar	59.50	71.40	34	004/AB017	Ashpan	33.00	39.60
14	004/BR021	Hinge Shim	0.46	0.55	35	004/AB044	Brick Retainer	6.60	7.92
15	002/BR020	Hinge	9.70	11.64	36	010/AB016	Side Plate	22.00	26.40
16	008/ST068/2	Hinge Pin Set	2.90	3.48	37	010/AB085	Store Stand Backplate	27.00	32.40
17#	003/AB001A	Door Assembly	205.00	246.00	38#	003/AB002	Front Lower Casting	65.00	78.00
18#	003/AB012A	Door Handle	35.00	42.00	39*	010/EW51	Ash Carrier (Optional Extra)	92.00	110.40
19#	003/AB055A	Latch Reciever	26.00	31.20	40#	010/TW33	Vert Rear Flue Adaptor (Opt'l Extra) ...	92.00	110.40
20	008/AB110	Air Control Gasket	8.50	10.20	41#	010/AB080	Heat Shield (Optional Extra)	63.00	75.60
21	010/AB130	Air Control Plate	27.50	33.00					

*These items are not shown on the drawing.

Please specify colour when ordering

Prices are shown in pounds sterling with vat at 20%

They are correct at the date shown but may be subject to change without notice. E. & O.E

These prices are subject to a carriage charge

To obtain spare parts please contact your local stockist giving Model, Part No. and Description. In case of difficulty contact the manufacturer at the address shown.

This drawing is for identification purposes only.

