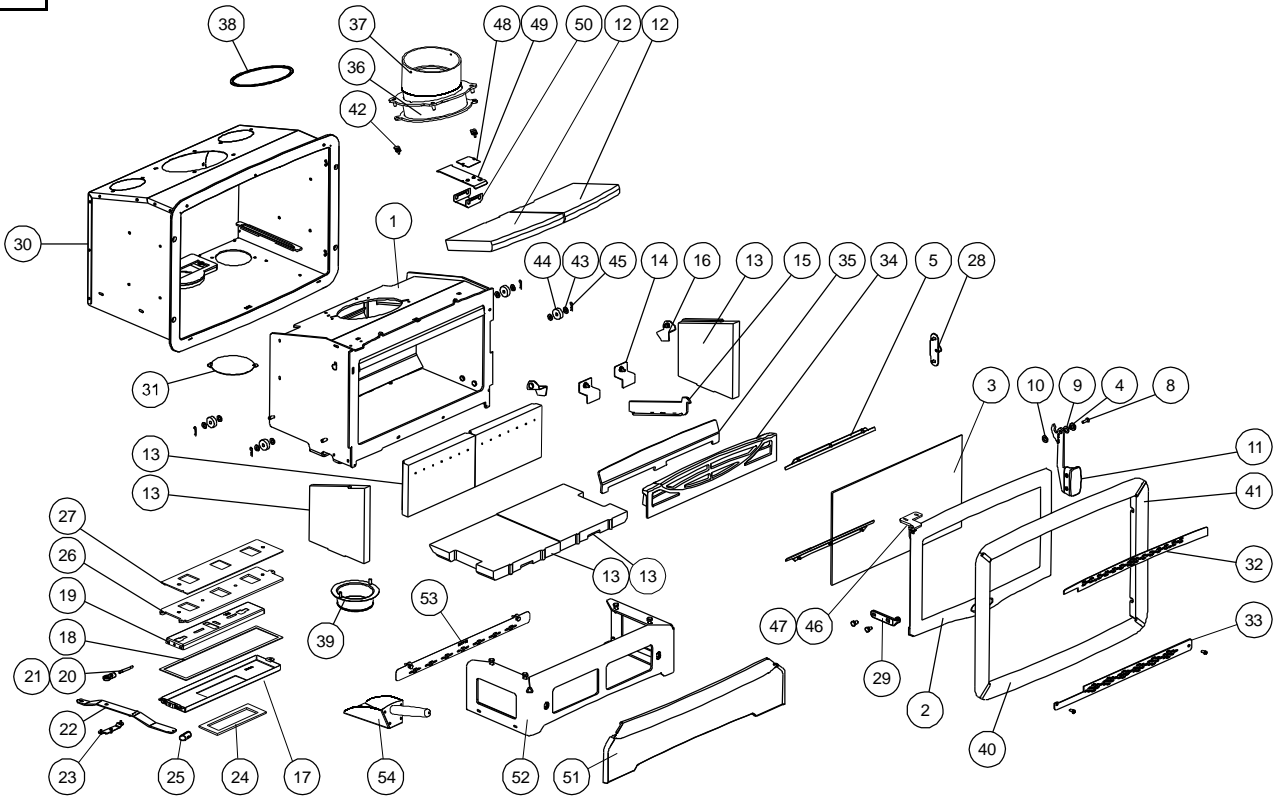




Issue D



| Item | Part No. | Description | Ex.Vat. | Inc.Vat. | Item | Part No. | Description | Ex.Vat. | Inc.Vat. |
|------|-------------|------------------------------------|---------|----------|------|------------|--|---------|----------|
| 1 | 001/XR010 | Firebox | | | 28 | 004/MR044 | Latch Plate | 7.90 | 9.48 |
| 2# | 002/XR001/A | Door Assembly | 159.30 | 191.16 | 29 | 002/XR020 | Lower Hinge Bracket | 12.90 | 15.48 |
| 3 | 006/MR019 | Glass | 54.75 | 65.70 | 30 | 010/XR011 | Convection Casing | | |
| 4 | 008/MR047 | Handle Pivot Boss | 4.95 | 5.94 | 31 | 004/MR060 | Air Duct Cover | 8.00 | 9.60 |
| 5 | 004/XR074 | Glass Retainer | 7.20 | 8.64 | 32 | 004/XR027 | Screen Top | 8.00 | 9.60 |
| 6* | 008/MR085 | Glass Seal | 9.20 | 11.04 | 33 | 004/XR026 | Screen Lower | 8.00 | 9.60 |
| 7* | 008/XR076 | Door Seal | 31.60 | 37.92 | 34 | 002/MR017 | Fence | 36.60 | 43.92 |
| 8 | 008/FF5046 | M6x20 CSK Allen Screw | 0.30 | 0.36 | 35 | 010/MR078 | Ash Barrier | 11.80 | 14.16 |
| 9 | 008/FFW027 | M10 Wavy Washer | 0.89 | 1.07 | 36 | 010/XR098 | 6" Lower Flue Adaptor | 39.45 | 47.34 |
| 10 | 008/FFW007 | M10x19 Washer | 0.10 | 0.12 | 37 | 010/XR096 | 6" Upper Flue Adaptor | 72.20 | 86.64 |
| 11 | 010/MR038 | Handle Assembly | | | 38 | 008/XR044 | Inner Flue Gasket | 8.00 | 9.60 |
| 12 | 011/MR031S | Set of Baffle Firebricks | 33.80 | 40.56 | 39 | 010/MR126 | 100mm Spigot Assy | 39.45 | 47.34 |
| 13 | 011/XR030S | Set Base, Back & Side Bricks | 62.10 | 74.52 | 40# | 002/MR113 | Top/Bottom Trim | 34.95 | 41.94 |
| 14 | 004/XR008 | Back Brick Bracket | 2.75 | 3.30 | 41# | 002/XR112 | Side Trim | 34.95 | 41.94 |
| 15 | 010/XR087 | Throat Plate Support Bracket | 19.70 | 23.64 | 42 | 004/GR090 | Fastener Retainer | 0.61 | 0.73 |
| 16 | 004/XR025 | Side Brick Bracket | 2.75 | 3.30 | 43 | 008/FFW007 | M8 Washer | 0.10 | 0.12 |
| 17 | 004/XR055 | Air Slide Cover | 32.65 | 39.18 | 44 | 010/XR085 | Roller | 2.75 | 3.30 |
| 18 | 008/XR063 | Air Box Upper Gasket | 10.60 | 12.72 | 45 | 008/FFP006 | R-Pin | 0.10 | 0.12 |
| 19 | 004/XR007 | Air Control Slider | 11.80 | 14.16 | 46 | 010/XR041 | Upper Hinge Bracket | 4.95 | 5.94 |
| 20 | 004/XR064 | Control Rod | 4.95 | 5.94 | 47 | 010/XR042 | Hinge Spacer | 3.85 | 4.62 |
| 21 | 008/FFM056 | Rod End | 11.70 | 14.04 | 48 | 012/XR014 | Serial No Label | | |
| 22 | 010/XR022 | Air Slide Control Handle | 10.75 | 12.90 | 49 | 004/MR116 | Serial Plate Carrier | | |
| 23 | 004/XR058 | Clicker Assembly | 9.85 | 11.82 | 50 | 004/MR115 | Serial No bracket | | |
| 24 | 008/XR062 | Airbox Lower Gasket | 9.15 | 10.98 | 51# | 002/MR114 | Fireplace Trim (Optional Extra) | 84.15 | 100.98 |
| 25 | 008/XR012 | Control Knob | 6.35 | 7.62 | 52 | 010/XR093 | Fireplace Stand (Optional Extra) | 43.50 | 52.20 |
| 26 | 004/XR072 | Air Control Plate | 30.40 | 36.48 | 53 | 004/MR118 | Fireplace Trim Infill | 7.60 | 9.12 |
| 27 | 008/XR073 | Air Control Gasket | 7.10 | 8.52 | 54 | 010/XR088 | Ash Scoop | 11.80 | 14.16 |

*These items are not shown on the drawing.
 # Please specify colour when ordering.
 Prices are shown in pounds sterling with vat at 20%
 They are correct at the date shown but may be subject to change without notice. E. & O.E
 These prices are subject to a carriage charge.

To obtain spare parts please contact your local stockist giving Model, Part No. and Description. In case of difficulty contact the manufacturer at the address shown.
 This drawing is for identification purposes only.

