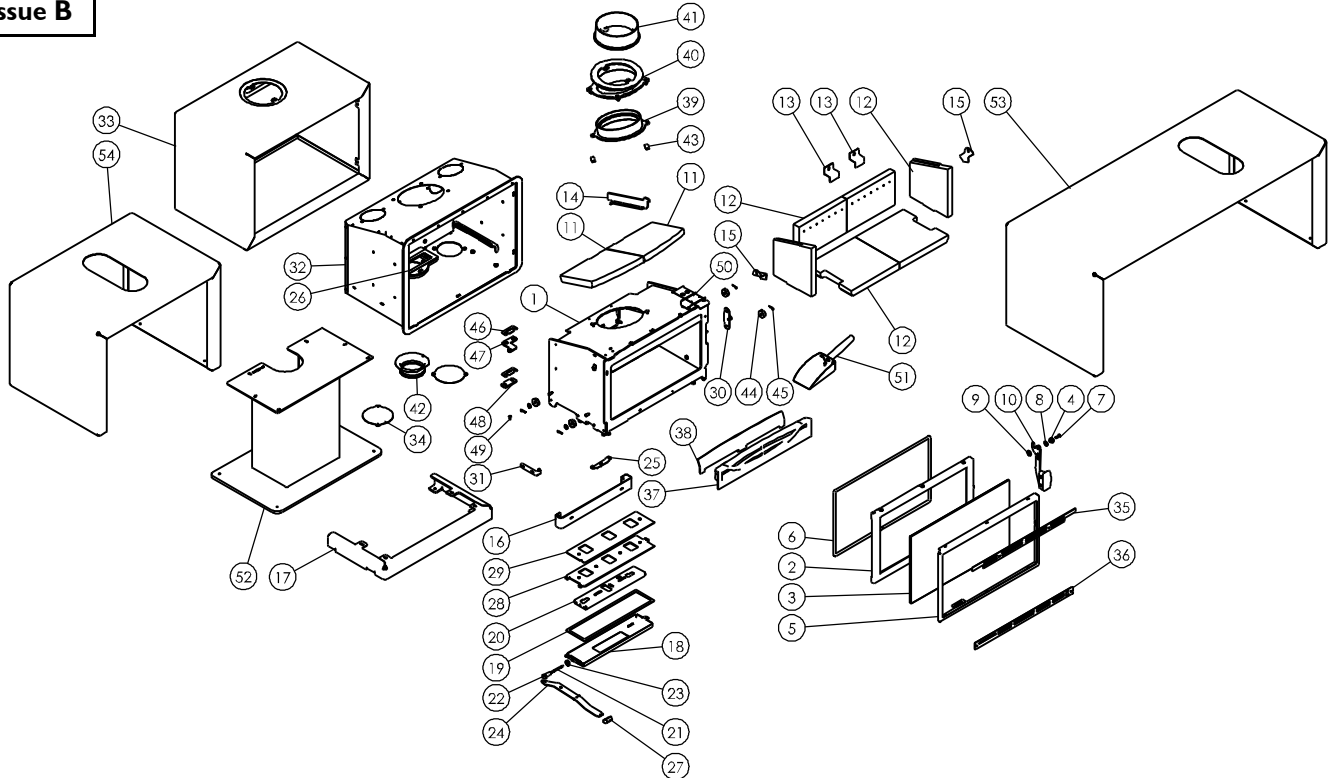




Issue B



Item	Part No.	Description	Ex.Vat.	Inc.Vat.	Item	Part No.	Description	Ex.Vat.	Inc.Vat.
1	001/XR010	Firebox			28	004/XR072	Air Control Plate	40.50	48.60
2	002/BT001	Door Casting	96.00	115.20	29	008/XR073	Air Control Gasket	9.25	11.10
3	006/BT018	Glass	146.00	175.20	30	004/MR044	Latch Plate	10.30	12.36
4	008/MR047	Handle Pivot Boss	6.55	7.86	31	002/XR020	Lower Hinge Bracket	16.80	20.16
5#	004/BT023	Glass Trim	40.00	48.00	32	010/XR011	Convection Casing	174.00	208.80
6	008/XR076	Door Seal	41.50	49.80	33#	005/JT049	Outer Casing	170.00	204.00
7	008/FFS046	M6x20 CSK Allen Screw	0.30	0.36	34	004/MR060	Air Duct Cover	10.50	12.60
8	008/FFW027	M10 Wavy Washer	1.16	1.39	35	004/JT025	Screen Top	15.60	18.72
9	008/FFW007	M10x19 Washer	0.10	0.12	36	004/JT029	Screen Lower	15.60	18.72
10	010/MR038	Handle Assembly	5.15	6.18	37	002/MR017	Fence	48.00	57.60
11	011/MR031S	Set of Baffle Firebricks	45.00	54.00	38	010/MR078	Ash Barrier	15.30	18.36
12	011/XR030S	Set Base, Back & Side Bricks	82.00	98.40	39	010/XR098	6" Lower Flue Adaptor	52.00	62.40
13	004/XR008	Back Brick Bracket	3.65	4.38	40	010/JT096	6" Upper Flue Adaptor	54.50	65.40
14	010/XR087	Throat Plate Support Bracket	26.00	31.20	41#	002/CH12B	Flue Collar	73.00	87.60
15	004/XR025	Side Brick Bracket	3.65	4.38	42	010/MR126	100mm Spigot Assy	52.00	62.40
16	004/JT052	Rear Fixing Bracket	25.50	30.60	43	004/GR090	Fastener Retainer	0.81	0.97
17	010/JT035	Table Top Plinth	46.00	55.20	44	010/XR085	Roller	3.65	4.38
18	004/XR055	Air Slide Cover	42.50	51.00	45	008/FFP006	R-Pin	0.10	0.12
19	008/XR063	Air Box Upper Gasket	13.90	16.68	46	010/BT043	Upper Hinge Spacer	2.60	3.12
20	004/XR007	Air Control Slider	15.30	18.36	47	010/XR041	Upper Hinge Bracket	6.55	7.86
21	004/XR064	Control Rod	6.55	7.86	48	010/XR042	Hinge Spacer	5.15	6.18
22	008/FFM056	Rod End	15.20	18.24	49	008/FFR016	Hinge Pin	0.20	0.24
23	008/BR052	Felt Washer	1.14	1.37	50	012/JT011	Serial No Label		
24	010/XR022	Air Slide Control Handle	14.00	16.80	51	010/XR088	Ash Scoop	15.30	18.36
25	004/XR058	Clicker Assembly	12.90	15.48	52#	010/JT034	Centre Stand	280.00	336.00
26	008/XR062	Airbox Lower Gasket	11.90	14.28	53#	010/JT070	Bench Stand	NA	
27	008/XR012	Control Knob	8.40	10.08	54#	010/JT071	Store Stand	NA	

*These items are not shown on the drawing.

Please specify colour when ordering. Prices are shown in pounds sterling with vat at 20% They are correct at the date shown but may be subject to change without notice. E. & O.E These prices are subject to a carriage charge.

To obtain spare parts please contact your local stockist giving Model, Part No. and Description. In case of difficulty contact the manufacturer at the address shown. This drawing is for identification purposes only.

