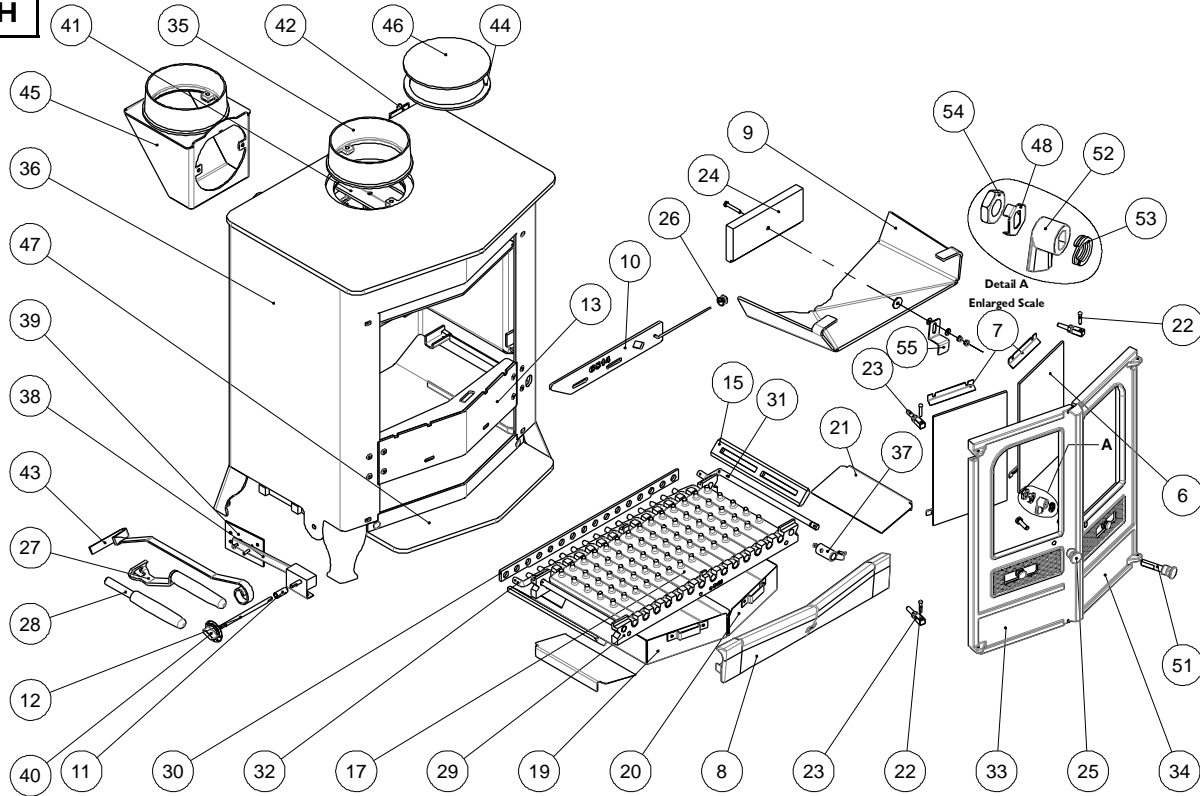




Issue H



Item	Part No.	Description	Ex.Vat.	Inc.Vat.	Item	Part No.	Description	Ex.Vat.	Inc.Vat.
3*	008/GS35S	Door Seal Set Incl. Adhesive	24.50	29.40	30	012/BV33	Mover Bar	50.50	60.60
4*	008/FW29	Door Seal Adhesive	9.10	10.92	31	012/BV37	Riddler Rod	29.00	34.80
5*	008/RW55	Glass Seal Kit	11.00	13.20	32	012/CG05	Idler Rod	28.00	33.60
6	006/LW30	Glass (Inc Seal)	30.00	36.00	33#	002/FV01/A	Left Hand Door Assembly	114.00	136.80
7	004/GV23	Glass Retainer	3.30	3.96	34#	002/FV02/A	Right Hand Door Assembly	118.00	141.60
8	002/CS07	Wood Retainer	62.00	74.40	35#	002/CH12B	Flue Collar	59.50	71.40
9	010/GS31	Throat Plate	59.50	71.40	36	009/CO16BWB/	Firebox / Boiler Assy (Country 16B Mk		
10	010/GS14	Secondary Air Slide	15.10	18.12	37	002/AY27	Riddler Knob	17.60	21.12
11	004/CS18	Thermostat Connector Tube	13.80	16.56	38	008/FW48	Thermostat	45.00	54.00
12	004/CS16	Thermostat Rod	12.30	14.76	39	008/FV49	Thermostat Flap	8.20	9.84
13	010/GS06	Front Middle Bar Assembly	60.00	72.00	40	008/BW50	Thermostat Knob	4.00	4.80
15	002/EW15	Side Fire Plate	28.00	33.60	41	010/AY51	Clamping Plate	15.80	18.96
16	002/BV16	Back Fire Plate	53.50	64.20	42	012/GS11W	Serial No. Label		
17	002/CG01	Bottom Grate Bar	13.90	16.68	43	012/FW34	Scraper Tool	10.90	13.08
18	002/CG01S14	Set of Grate Bars (14 Per Set)	156.00	187.20	44	008/NV38	Flue Fixing Rope Seal	6.20	7.44
19	004/FV17L	Left Hand Ashpan	64.00	76.80	45#	010/TW33	Vert. Rear Flue Connector (Opt'l Extra)	92.00	110.40
20	004/FV17R	Right Hand Ashpan	64.00	76.80	46	012/TW09	Blanking Plate	19.90	23.88
21	004/BV19	Ash Shedding Plate	13.90	16.68	47	010/GS12	Shelf	58.00	69.60
22	008/BW39/S	Hinge Pin Set	3.10	3.72	48	004/ST008	Tabbed Locking Washer	1.20	1.44
23	008/FW27	Hinge Post	5.60	6.72	49*	010/BW51	Ash Carrier (Optional Extra)	92.00	110.40
24	011/GS29	Upper Throatplate Brick	14.30	17.16	50*	008/TH02/L	Low Level Pipe Stat (Opt'l Extra)	46.00	55.20
25	002/DY19	Left Hand Door Knob	12.30	14.76	51	002/DY18	R.H. Door Knob & Spindle	17.20	20.64
26	002/TW13	Air Control Knob	15.10	18.12	52	002/AY14	Door Catch Cam	8.50	10.20
27	012/BV20/A	Ashpan / Door Opening Tool	22.00	26.40	53	008/FFW015	M12 Double Coil Spring Washer	1.80	2.16
28	012/BV36/A	Riddling Tool	19.80	23.76	54	008/FFN001	M12 Half Nut	0.17	0.20
29	002/BV30	Carrier Bar	59.00	70.80	55	004/XV30	Brick Retaining Bracket	6.10	7.32

* These items are not shown on the drawing.

Please specify colour when ordering.

Prices are shown in pounds sterling with vat at 20%

They are correct at the date shown but may be subject to change without notice. E. & O.E

These prices are subject to a carriage charge.

To obtain spare parts please contact your local stockist giving Model, Part No. and Description. In case of difficulty contact the manufacturer at the address shown.

This drawing is for identification purposes only.

