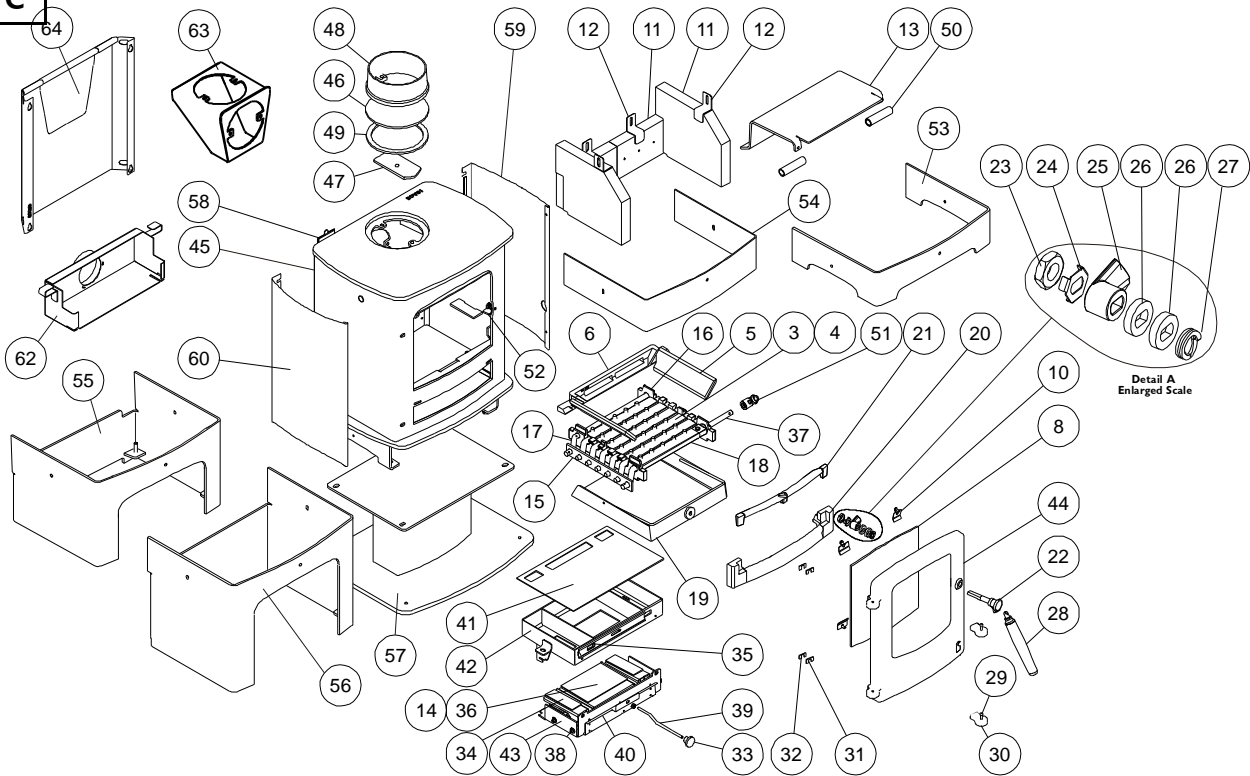




**Issue C**



Item	Part No.	Description	Ex.Vat.	Inc.Vat.	Item	Part No.	Description	Ex.Vat.	Inc.Vat.
1*	008/SY16S	Door Seal Set Inc.Adhesive .....	27.00	32.40	34	004/AY22-1S	Secondary/Bypass Air Inlet Flap .....	19.40	23.28
2*	008/FW29	Door Seal Adhesive .....	10.10	12.12	35	004/SY21	Air Bypass Slide .....	18.40	22.08
3	002/CG01	Bottom Grate Bar .....	15.30	18.36	36	004/CY22P	Primary Air Inlet Flap .....	21.00	25.20
4	002/CG015S	Set of Grate Bars(5) .....	63.00	75.60	37	002/CG11	Driving Rod .....	18.60	22.32
5	002/SY15	Side Fire Plate .....	34.50	41.40	38	004/SY24	Flap Mounting Rod (Inc. Fixings) .....	8.80	10.56
6	002/HW16	Back Fire Plate .....	17.40	20.88	39	004/SY27	Air Control Rod .....	12.90	15.48
8	006/SY18	Glass (Inc Seal) .....	83.00	99.60	40	004/SY23	Actuator Assembly .....	45.50	54.60
9*	008/SY43	Glass Seal .....	10.30	12.36	41	008/SY13	Upper Quattro Box Gasket .....	16.90	20.28
10	004/KV23	Glass Retainer .....	0.63	0.76	42	010/SY20	Upper Quattro Box .....	71.00	85.20
11	011/SY29S	Set of Fire Bricks (4) .....	91.00	109.20	43	010/SY19	Lower Quattro Box .....	45.50	54.60
12	004/XV30	Brick Retainer .....	6.75	8.10	44#	002/SX01/A	Door Assembly .....	186.00	223.20
13	010/SY31	Throat Plate .....	48.50	58.20	45	001/SX10	Firebox (Cove1 MkII)		
14	008/SY26S	Set of Air Inlet Flap Pads .....	15.20	18.24	46	012/PV09	Blanking Plate .....	22.00	26.40
15	012/SY33	Mover Bar .....	39.50	47.40	47	010/EY51	Clamping Plate .....	17.40	20.88
16	002/SY30	Carrier Bar .....	47.50	57.00	48#	002/PV12B	Flue Collar .....	51.00	61.20
17	012/CG05	Idler Rod .....	31.00	37.20	49	008/EY38	Flue Fixing Rope Seal .....	6.85	8.22
18	002/CG12	Driving Gratebar .....	38.50	46.20	50	010/SY06	Throatplate Support Tube .....	3.00	3.60
19	004/SX17	Ashpan .....	64.00	76.80	51	002/PX89	Riddler Knob .....	32.50	39.00
20	002/SY07	Front Firebar .....	52.00	62.40	52	010/PY38	Door Catch Stop .....	3.20	3.84
21	002/SY08	Deepening Bar .....	42.50	51.00	53#	010/SX32	Low Arch Stand .....	65.00	78.00
22	002/PX92	Door Knob & Spindle .....	21.00	25.20	54#	010/SY11	Low Stand .....	65.00	78.00
23	008/FFN001	M12 Half Nut .....	0.19	0.23	55#	010/SX35	Midi Stand .....	158.00	189.60
24	004/ST008	Tabbed Locking Washer .....	1.32	1.58	56#	010/SY02	Store Stand .....	178.00	213.60
25	002/AY14	Door Catch .....	9.35	11.22	57#	010/SY12	Centre Stand .....	124.00	148.80
26	010/ST031	Door Catch Spacer .....	1.87	2.24	58	012/SX11	Serial No. Label		
27	008/FFW015	M12 Double Coil Spring Washer .....	1.98	2.38	59#	005/SX93R	RH Curved Side Panel .....	20.35	24.42
28	008/PX95	Door/Riddling/Ashpan Tool .....	32.00	38.40	60#	005/SX93L	LH Curved Side Panel .....	20.35	24.42
29	008/BW39/S	Hinge Pin Set .....	3.45	4.14	61*	010/EW51	Ash Carrier (Optional Extra) .....	106.00	127.20
30	002/PY24	Hinge Post .....	15.00	18.00	62	010/TH61	External Air Manifold Kit .....	110.00	132.00
31	004/PY25B	Hinge Post Shim 0.9mm .....	0.47	0.56	63#	010/BU034	Vert. Rear Flue Adapter (Opt'l Extra) ..	106.00	127.20
32	004/PY25A	Hinge Post Shim 2mm .....	0.47	0.56	64#	010/SX80	Heat Shield .....	59.00	70.80
33	008/AY37	Air Control Knob .....	4.40	5.28					

\*These items are not shown on the drawing.

# Please specify colour when ordering. Prices are shown in pounds sterling with vat at 20% They are correct at the date shown but may be subject to change without notice. E. & O.E These prices are subject to a carriage charge

To obtain spare parts please contact your local stockist giving Model, Part No. and Description. In case of difficulty contact the manufacturer at the address shown. This drawing is for identification purposes only.

