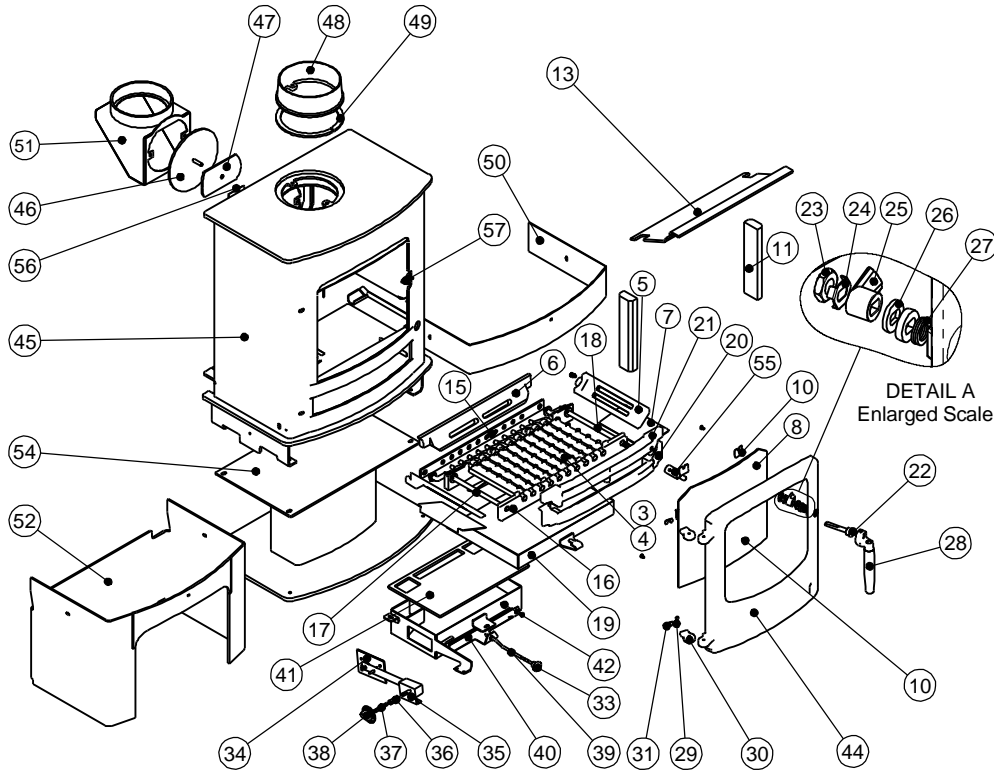




Issue G



Item	Part No.	Description	Ex.Vat.	Inc.Vat.	Item	Part No.	Description	Ex.Vat.	Inc.Vat.
1	008/PY23S	Door Seal Set Inc.Adhesive	23.05	27.66	30	002/PY24	Hinge Post	12.75	15.30
2	008/FW29	Door Seal Adhesive	8.50	10.20	31	004/PY25B	Hinge Post Shim 0.9mm	0.39	0.47
3	002/CG20	Bottom Grate Bar	13.05	15.66	33	008/AY37	Air Control Knob	3.70	4.44
4	002/CG20S10	Set of Grate Bars (10)	102.85	123.42	34	008/FV49	Thermostat Flap	7.60	9.12
5	002/CY15	Side Fire Plate	27.05	32.46	35	008/FW48	Thermostat	41.95	50.34
6	002/AY16	Back Fire Plate	47.70	57.24	36	004/CS18	Thermostat Connector Tube	12.90	15.48
7	004/FS19	Ash Shedding Plate	14.75	17.70	37	004/FS16	Thermostat Extension Rod	10.60	12.72
8	006/PY18	Glass (Inc Seal)	93.20	111.84	38	008/BW50	Thermostat Knob	3.70	4.44
9	008/PY45	Glass Seal	9.40	11.28	39	004/PY32	Air Control Rod	11.50	13.80
10	004/KV23	Glass Retainer	0.52	0.62	40	004/FS21	Secondary Air Slide	16.60	19.92
11	011/FS09S	Set of Fire Bricks (2)	23.50	28.20	41	008/DS12	Thermostat Box Gasket	15.35	18.42
13	010/FS31	Throat Plate	29.10	34.92	42	010/FS20	Thermostat Box	43.40	52.08
15	012/AY33	Mover Bar	36.80	44.16	44#	002/PY01/A	Door Assembly	192.95	231.54
16	002/AY30	Carrier Bar	40.25	48.30	45	009/COV02B/A	Firebox (Cove2B)		
17	012/AY13	Idler Rod	25.85	31.02	46	012/TW09	Blanking Plate	18.75	22.50
18	012/AY15	Riddler Rod	26.55	31.86	47	010/AY51	Clamping Plate	14.80	17.76
19	004/PY17	Ashpan	58.50	70.20	48#	002/CH12B	Flue Collar	55.40	66.48
20	002/AY07B	Front Firebar	43.35	52.02	49	008/NV38	Flue Fixing Rope Seal	5.70	6.84
21	002/FS08	Deepening Bar	52.75	63.30	50	010/PY36	Base Cover	NA	
22	002/RV15	Door Knob & Spindle	15.85	19.02	51#	010/TW33	Vert. Rear Flue Connector (Opt'l Extra)	86.00	103.20
23	008/FFN001	M12 Half Nut	0.15	0.18	52#	010/PY33	Store Stand	140.00	168.00
24	004/ST008	Tabbed Locking Washer	1.02	1.22	54#	010/PY34	Centre Stand	84.00	100.80
25	002/AY14	Door Catch	7.90	9.48	55	002/AY27	Riddler Knob	16.45	19.74
26	010/ST031	Door Catch Spacer	1.45	1.74	56	012/FS11	Serial No. Label	NA	
27	008/FFW015	M12 Double Coil Spring Washer	1.55	1.86	57	010/PY38	Door Catch Stop	2.65	3.18
28	008/PY13	Door/Riddling/Ashpan Tool	26.45	31.74	58*	010/BW51	Ash Carrier (Optional Extra)	84.00	100.80
29	008/BW39/S	Hinge Pin Set	2.80	3.36					

* These items are not shown on the drawing.
 # Please specify colour when ordering.
 Prices are shown in pounds sterling with vat at 20%
 They are correct at the date shown but may be subject to change without notice. E. & O.E
 These prices are subject to a carriage charge

To obtain spare parts please contact your local stockist giving Model, Part No. and Description. In case of difficulty contact the manufacturer at the address shown.
 This drawing is for identification purposes only.

