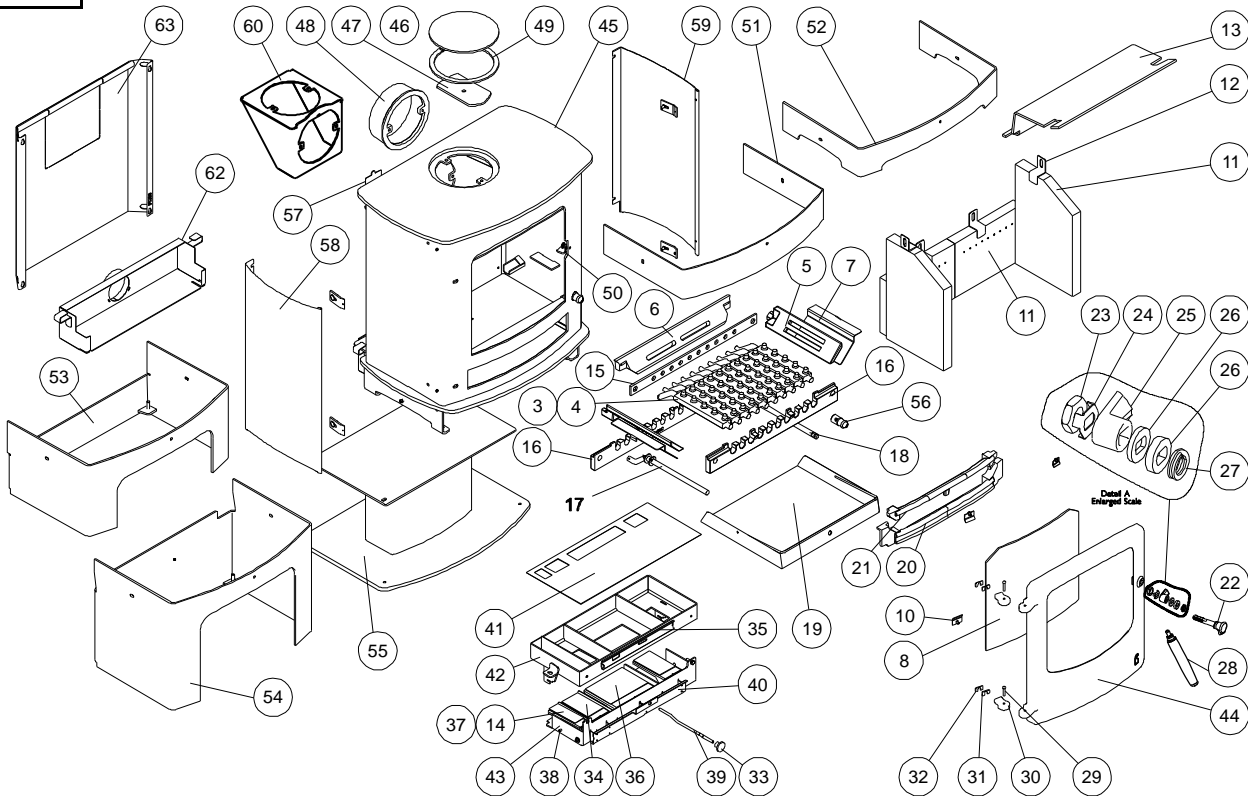




Issue B



Item	Part No.	Description	Ex.Vat.	Inc.Vat.	Item	Part No.	Description	Ex.Vat.	Inc.Vat.
1*	008/PY23S	Door Seal Set Inc.Adhesive	23.05	27.66	33	008/AY37	Air Control Knob	3.70	4.44
2*	008/FW29	Door Seal Adhesive	8.50	10.20	34	004/CY22S	Secondary Air Inlet Flap	17.00	20.40
3	002/CG20	Bottom Grate Bar	13.05	15.66	35	004/CY21	Air Bypass Slide	16.45	19.74
4	002/CG20S10	Set of Grate Bars (10)	102.85	123.42	36	004/CY22P	Primary Air Inlet Flap	17.55	21.06
5	002/CY15	Side Fire Plate	27.05	32.46	37	004/AY22-1S	Secondary/Bypass Air Inlet Flap	16.45	19.74
6	002/AY16	Back Fire Plate	47.70	57.24	38	004/CY24	Flap Mounting Rod (Inc. Fixings)	8.50	10.20
7	004/BY24	Ash Shedding Plate	13.05	15.66	39	004/PY32	Air Control Rod	11.50	13.80
8	006/PY18	Glass (Inc Seal)	93.20	111.84	40	004/CY23	Actuator Assembly	40.00	48.00
9*	008/PY45	Glass Seal	9.40	11.28	41	008/PY16	Upper Quattro Box Gasket	14.40	17.28
10	004/KV23	Glass Retainer	0.52	0.62	42	010/PY20	Upper Quattro Box	58.70	70.44
11	011/PY29S	Set of Fire Bricks (4)	83.15	99.78	43	010/CY19	Lower Quattro Box	40.25	48.30
12	004/XV30	Brick Retainer	5.65	6.78	44#	002/PX01/A	Door Assembly	192.95	231.54
13	010/PY31	Throat Plate	47.35	56.82	45	001/PX10	Firebox (Cove 2 MkII)		
14	008/CY26S	Set of Air Inlet Flap Pads	16.00	19.20	46	012/TW09	Blanking Plate	18.75	22.50
15	012/AY33	Mover Bar	36.80	44.16	47	010/AY51	Clamping Plate	14.80	17.76
16	002/AY30	Carrier Bar	40.25	48.30	48#	002/CH12B	Flue Collar	55.40	66.48
17	012/AY13	Idler Rod	25.85	31.02	49	008/NV38	Flue Fixing Rope Seal	5.70	6.84
18	012/AY15	Riddler Rod	26.55	31.86	50	010/PY38	Door Catch Stop	2.65	3.18
19	004/PX17	Ashpan	58.05	69.66	51#	010/PY36	Low Stand	53.00	63.60
20	002/AY07B	Front Firebar	43.35	52.02	52#	010/PX32	Low Arch Stand	53.00	63.60
21	002/AY08	Deepening Bar	38.90	46.68	53#	010/PX35	Mid Stand	130.00	156.00
22	002/PX92	Door Knob & Spindle	17.55	21.06	54#	010/PY33	Store Stand	140.00	168.00
23	008/FFN001	M12 Half Nut	0.15	0.18	55#	010/PY34	Centre Stand	84.00	100.80
24	004/ST008	Tabbed Locking Washer	1.02	1.22	56	002/PX89	Riddler Knob	27.20	32.64
25	002/AY14	Door Catch	7.90	9.48	57	012/PX19	Serial No. Label		
26	010/ST031	Door Catch Spacer	1.45	1.74	58#	005/PX93L	LH Curved Side Panel	26.05	31.26
27	008/FFW015	M12 Double Coil Spring Washer	1.55	1.86	59#	005/PX93R	RH Curved Side Panel	26.05	31.26
28	008/PX95	Door/Riddling/Ashpan Tool	26.45	31.74	60#	010/TW33	Vert. Rear Flue Connector (Opt'l Extra	86.00	103.20
29	008/BW39/S	Hinge Pin Set	2.80	3.36	61*	010/BW51	Ash Carrier (Optional Extra)	84.00	100.80
30	002/PY24	Hinge Post	12.75	15.30	62	010/TH62	External Air Manifold Kit (Optional Extr	88.50	106.20
31	004/PY25B	Hinge Post Shim 0.9mm	0.39	0.47	63#	010/PX80	Heatshield (Optional Extra)	56.00	67.20
32	004/PY25A	Hinge Post Shim 2mm	0.39	0.47					

*These items are not shown on the drawing.

Please specify colour when ordering.

Prices are shown in pounds sterling with vat at 20%

They are correct at the date shown but may be subject to change without notice. E. & O.E

These prices are subject to a carriage charge.

To obtain spare parts please contact your local stockist giving Model, Part No. and Description. In case of difficulty contact the manufacturer at the address shown.

This drawing is for identification purposes only.

