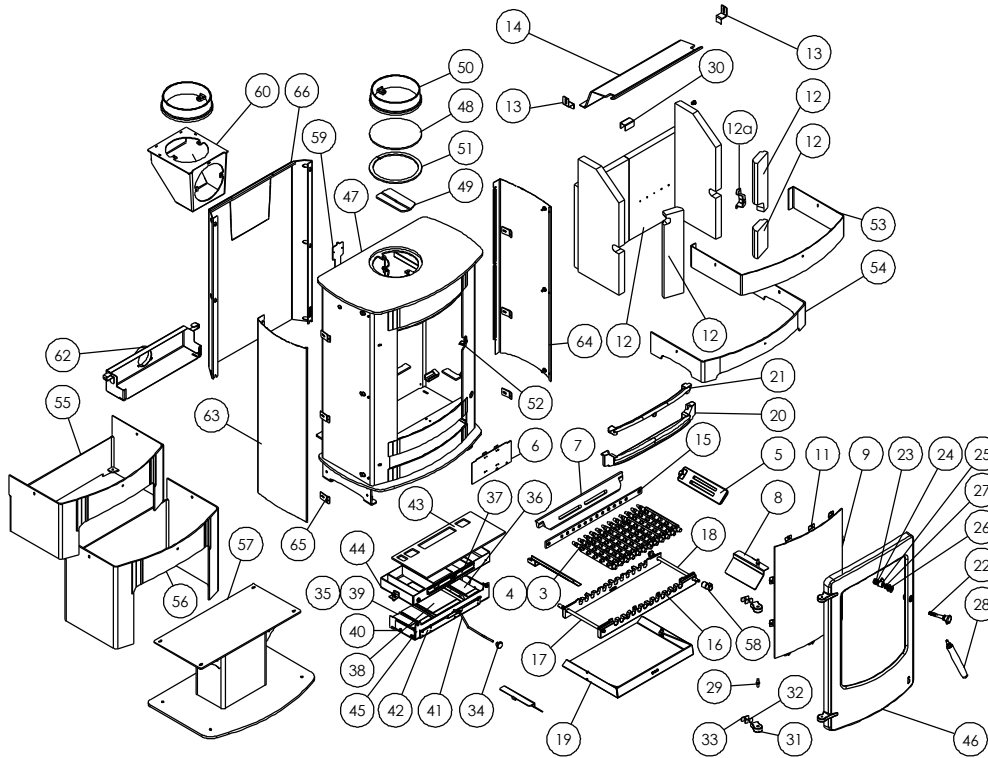




Issue A



Item	Part No.	Description	Ex.Vat.	Inc.Vat.	Item	Part No.	Description	Ex.Vat.	Inc.Vat.
1*	008/RV23S	Door Seal Set Inc.Adhesive	23.05	27.66	34	008/AY37	Air Control Knob	3.70	4.44
2*	008/FW29	Door Seal Adhesive	8.50	10.20	35	008/CY26S	Set of Air Inlet Flap Pads	16.00	19.20
3	002/CG20	Bottom Grate Bar	13.05	15.66	36	004/CY22S	Secondary Air Inlet Flap	17.00	20.40
4	002/CG20S12	Set of Grate Bars (12)	123.35	148.02	37	004/CY21	Air Bypass Slide	16.45	19.74
5	002/CY15	Side Fire Plate	27.05	32.46	38	004/CY22P	Primary Air Inlet Flap	17.55	21.06
6	004/RXE081	Undergrate Blanking Plate	12.50	15.00	39	004/AY22-1S	Secondary/Bypass Air Inlet Flap	16.45	19.74
7	002/BY16	Back Fire Plate	50.20	60.24	40	004/CY24	Flap Mounting Rod (Inc. Fixings)	8.50	10.20
8	004/BY24	Ash Shedding Plate	13.05	15.66	41	004/RV32	Air Control Rod	11.50	13.80
9	006/RV18	Glass (Inc Seal)	147.90	177.48	42	004/CY23	Actuator Assembly	40.00	48.00
10*	008/RV45	Glass Seal	10.20	12.24	43	008/RV16	Upper Quattro Box Gasket	14.40	17.28
11	004/KV23	Glass Retainer	0.52	0.62	44	010/PY20	Upper Quattro Box	58.70	70.44
12	011/RXE129S	Set of Fire Bricks (6)	59.90	71.88	45	010/CY19	Lower Quattro Box	40.25	48.30
12a	004/RX041	Front Brick Bracket	11.50	13.80	46#	002/RX01/A	Door Assembly	452.85	543.42
13	004/XV30	Brick Retainer	5.65	6.78	47#	001/RX10	Firebox (Cove 3 MkII)		
14	010/RV31	Throat Plate	60.10	72.12	48	010/CY37	Blanking Plate	18.75	22.50
15	012/BY33	Mover Bar	37.30	44.76	49	010/CY61	Clamping Plate	14.80	17.76
16	002/BY30	Carrier Bar	43.15	51.78	50#	002/RV45	Flue Collar	58.20	69.84
17	012/AY13	Idler Rod	25.85	31.02	51	008/CY38	Flue Fixing Rope Seal	5.70	6.84
18	012/AY15	Riddler Rod	26.55	31.86	52	002/RX38	Door Stop	7.70	9.24
19	004/RX17	Ashpan	55.75	66.90	53#	010/RV13	Low Stand	63.00	75.60
20	002/BY07B	Front Firebar	47.35	56.82	54#	010/RX32	Low Arch Stand	63.00	75.60
21	002/BY08	Deepening Bar	39.50	47.40	55#	010/RX35	Midi Stand	170.00	204.00
22	002/PX92	Door Knob & Spindle	17.55	21.06	56#	010/RX11	Store Stand	180.00	216.00
23	008/FFN001	M12 Half Nut	0.15	0.18	57#	010/RX12	Centre Stand	120.00	144.00
24	004/ST008	Tabbed Locking Washer	1.02	1.22	58	002/PX89	Riddler Knob	27.20	32.64
25	002/AY14	Door Catch Cam	7.90	9.48	59	012/RXE011	Serial No. Label		
26	010/ST031	Door Catch Spacer	1.45	1.74	60#	010/CY34	Vert. Rear Flue Connector (Opt'l Extra	94.00	112.80
27	008/FFW015	M12 Double Coil Spring Washer	1.55	1.86	61#	010/BW51	Ash Carrier (Optional Extra)	84.00	100.80
28	008/PX95	Door/Riddling/Ashpan Tool	26.45	31.74	62	010/TH62	External Air Manifold Kit	88.50	106.20
29	008/PV28/S	Hinge Pin Set (2 Per Set)	2.80	3.36	63#	005/RX93L	LH Curved Side Panel	29.20	35.04
30	004/GV24	Rear Brick Joining Bracket	3.70	4.44	64#	005/RX93R	RH Curved Side Panel	29.20	35.04
31	002/RV26	Hinge Post	12.75	15.30	65	010/PX96	Panel Fixing Bracket	8.20	9.84
32	004/RV25B	Hinge Post Shim 0.9mm	0.39	0.47	66#	010/RX80	Heatshield	62.00	74.40
33	004/RV25A	Hinge Post Shim 2mm	NA						

* These items are not shown on the drawing.
 # Please specify colour when ordering.
 Prices are shown in pounds sterling with vat at 20%
 They are correct at the date shown but may be subject to change without notice. E. & O.E
 These prices are subject to a carriage charge.

To obtain spare parts please contact your local stockist giving Model, Part No. and Description. In case of difficulty contact the manufacturer at the address shown.
 This drawing is for identification purposes only.

