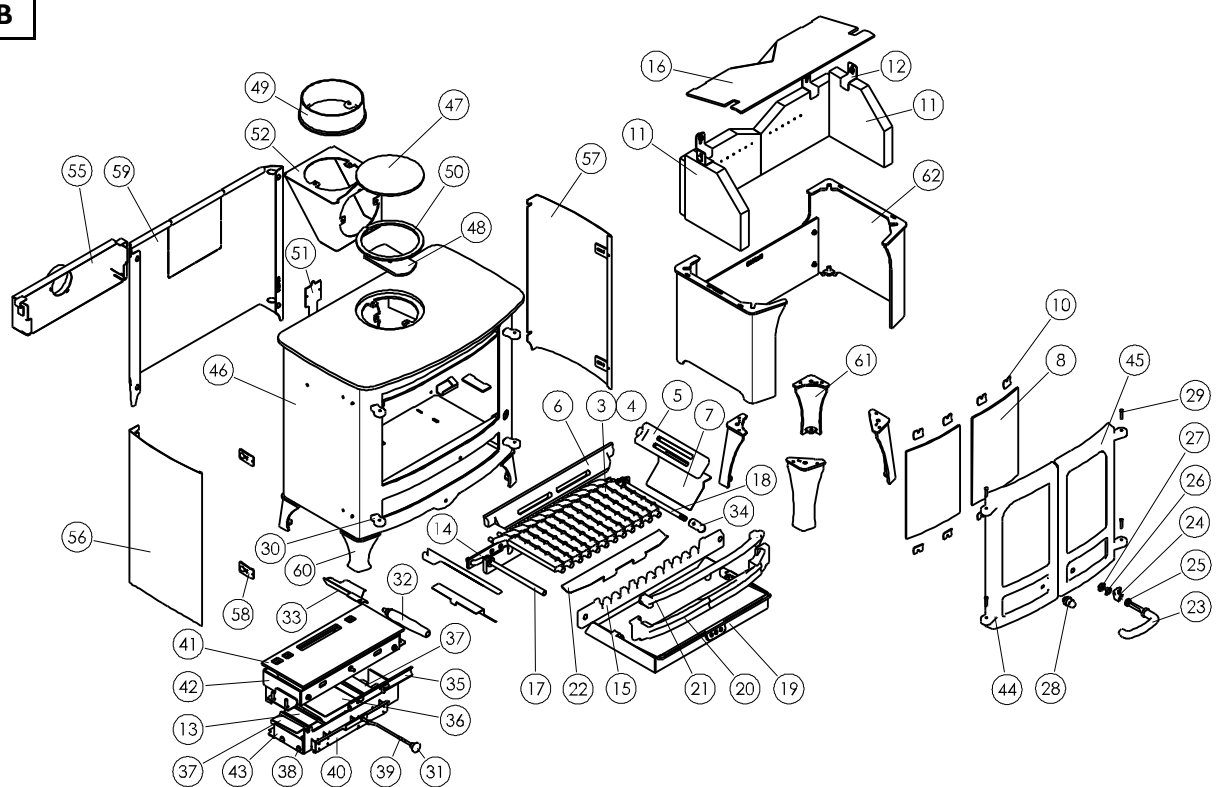




**Issue B**



Item	Part No.	Description	Ex.Vat.	Inc.Vat.	Item	Part No.	Description	Ex.Vat.	Inc.Vat.
1*	008/BY35S	Door Seal Set Inc. Adhesive .....	27.00	32.40	32	008/PX95	Riddling/ Ashpan Tool .....	32.00	38.40
2*	008/FW29	Door Seal Adhesive .....	10.10	12.12	33	004/BX048	Tool Holder .....	21.50	25.80
3	002/CG20	Bottom Grate Bar .....	15.30	18.36	34	002/PX89	Riddler Knob .....	32.50	39.00
4	002/CG20S12	Set of Grate Bars (12) .....	148.00	177.60	35	004/AY21	Air Bypass Slide .....	19.40	23.28
5	002/CY15	Side Fire Plate .....	32.50	39.00	36	004/AY22-1P	Primary Air Inlet Flap .....	19.40	23.28
6	002/BY16	Back Fire Plate .....	59.50	71.40	37	004/AY22-1S	Secondary/Bypass Air Inlet Flap .....	19.40	23.28
7	004/BY24	Ash Shedding Plate .....	15.30	18.36	38	004/AY24-02	Flap Mounting Rod (Inc. Fixings) .....	9.35	11.22
8	006/BY18	Glass (Inc Seal) .....	72.00	86.40	39	004/BY23-07	Air Control Rod .....	13.60	16.32
9*	008/AY45	Glass Seal .....	11.50	13.80	40	004/AY23	Actuator Assembly .....	47.50	57.00
10	004/KV23	Glass Retainer .....	0.63	0.76	41	008/AY39	Upper Quattro Box Gasket .....	16.90	20.28
11	011/BY48S	Set of Fire Bricks (4) .....	79.00	94.80	42	010/AY20	Upper Quattro Box .....	74.00	88.80
12	004/XV30	Brick Retainer .....	6.75	8.10	43	010/AY19	Lower Quattro Box .....	47.50	57.00
13	008/AY26S	Set of Air Inlet Flap Pads .....	16.10	19.32	44#	002/BY01/A	Left Hand Door Assembly .....	184.00	220.80
14	012/BY33	Mover Bar .....	44.00	52.80	45#	002/BY02/A	Right Hand Door Assembly .....	192.00	230.40
15	002/BY30	Carrier Bar .....	51.00	61.20	46#	001/BZ010	Firebox (Island IIZ)		
16	010/BY47	Throat Plate .....	76.00	91.20	47	012/TW09	Blanking Plate .....	22.00	26.40
17	012/AY13	Idler Rod .....	31.00	37.20	48	010/AY51	Clamping Plate .....	17.40	20.88
18	012/AY15	Riddler Rod .....	32.00	38.40	49#	002/CH12B	Flue Collar .....	66.00	79.20
19	004/BX17	Ashpan .....	74.00	88.80	50	008/NV38	Flue Fixing Rope Seal .....	6.85	8.22
20	002/BY07B	Front Firebar .....	56.00	67.20	51	012/BZ011	Serial No. Label		
21	002/BY08	Deepening Bar .....	47.00	56.40	52#	010/TW33	Vert. Rear Flue Connector (Opt'l Extra	106.00	127.20
22	004/AY78	Front Ash Shedding Plate .....	25.00	30.00	53*	010/BW51	Ash Carrier (Optional Extra) .....	106.00	127.20
23	008/KV16	R.H. Door Handle .....	20.00	24.00	54*	010/BY83	Smoke Reducing Kit .....	47.50	57.00
24	002/AY14	Door Catch Cam .....	9.35	11.22	55	010/TH63	External Air Manifold Kit .....	110.00	132.00
25	008/FFW01S	M12 Double Coil Spring Washer .....	1.98	2.38	56#	005/BX093L	LH Curved Panel (Optional) .....	42.50	51.00
26	004/ST008	Tabbed Locking Washer .....	1.32	1.58	57#	005/BX093R	RH Curved Panel (Optional) .....	42.50	51.00
27	008/FFN001	M12 Half Nut .....	0.19	0.23	58	010/PX96	Panel Fixing Bracket .....	9.70	11.64
28	008/KV13	L.H. Door Knob .....	3.20	3.84	59#	010/BX080	Heatshield (Opt'l Extra) .....	78.00	93.60
29	008/BW39/S	Hinge Pin Set .....	3.45	4.14	60#	010/BY12S	Set of Low Legs (4) .....	68.00	81.60
30	002/PY24	Hinge Post .....	15.00	18.00	61#	010/BY13S	Set of High Legs (4) .....	81.00	97.20
31	008/AY37	Air Control Knob .....	4.40	5.28	62#	010/BY87	Store Stand .....	198.00	237.60

\*This item is not shown on the drawing.

# Please specify colour when ordering. Prices are shown in pounds sterling with vat at 20% They are correct at the date shown but may be subject to change without notice. E. & O.E These prices are subject to a carriage charge.

To obtain spare parts please contact your local stockist giving Model, Part No. and Description. In case of difficulty contact the manufacturer at the address shown. This drawing is for identification purposes only.

