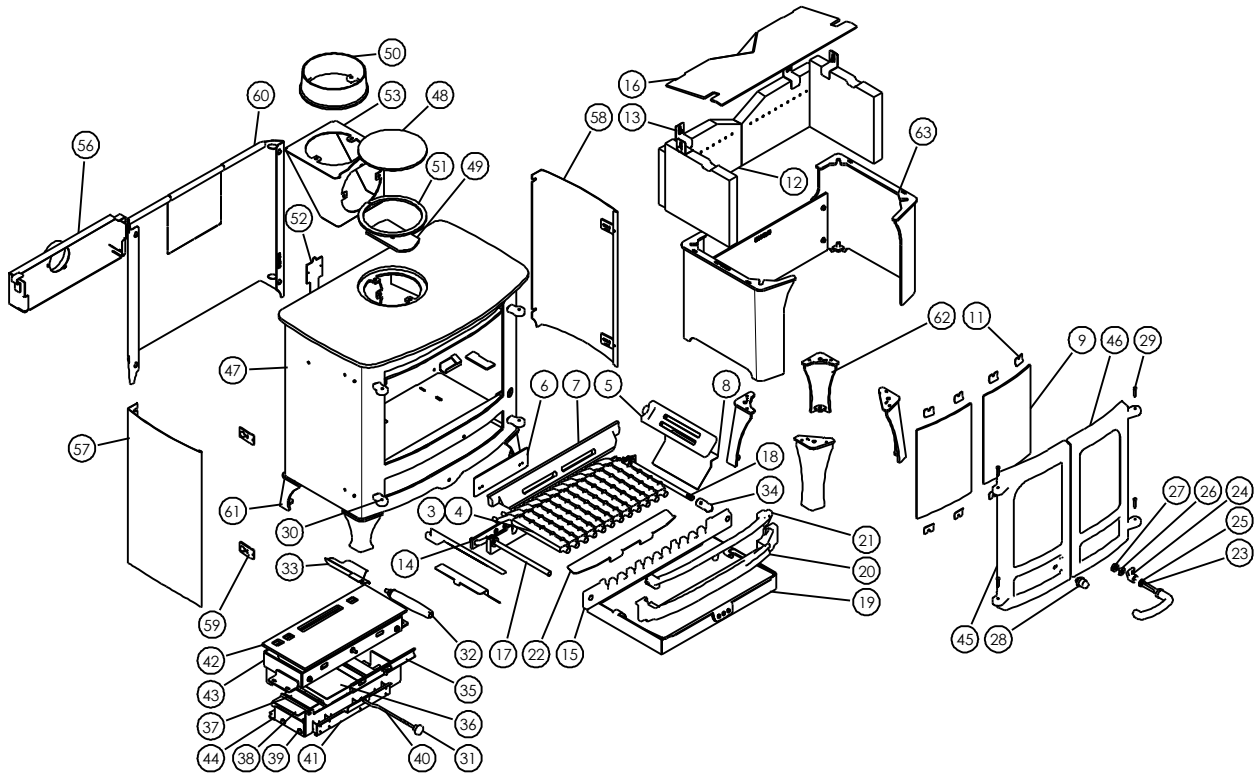




Issue B



Item	Part No.	Description	Ex.Vat.	Inc.Vat.	Item	Part No.	Description	Ex.Vat.	Inc.Vat.
1*	008/BY355	Door Seal Set Inc. Adhesive	23.05	27.66	33	004/BX048	Tool Holder	18.00	21.60
2*	008/FW29	Door Seal Adhesive	8.50	10.20	34	002/PX89	Riddler Knob	27.20	32.64
3	002/CG20	Individual Grate Bar	13.05	15.66	35	004/AY21	Air Bypass Slide	16.45	19.74
4	002/CG20S12	Set of Grate Bars (12)	123.35	148.02	36	004/AY22-1P	Primary Air Inlet Flap	16.45	19.74
5	002/CY15	Side Fire Plate	27.05	32.46	37	008/AY26S	Set of Air Inlet Flap Pads	13.75	16.50
6	004/BZE081	Undegrate Blanking Plate	12.05	14.46	38	004/AY22-1S	Secondary/Bypass Air Inlet Flap	16.45	19.74
7	002/BY16	Back Fire Plate	50.20	60.24	39	004/AY24-02	Flap Mounting Rod (Inc. Fixings)	7.90	9.48
8	004/BY24	Ash Shedding Plate	13.05	15.66	40	004/BY23-07	Air Control Rod	11.50	13.80
9	006/BY18	Glass (Inc Seal)	60.30	72.36	41	004/AY23	Actuator Assembly	40.00	48.00
10*	008/AY45	Glass Seal	9.70	11.64	42	008/AY39	Upper Quattro Box Gasket	14.40	17.28
11	004/KV23	Glass Retainer	0.52	0.62	43	010/AY20	Upper Quattro Box	61.65	73.98
12	011/BZE148S	Set Of Fire Bricks	65.95	79.14	44	010/AY19	Lower Quattro Box	40.25	48.30
13	004/XV30	Brick Retainer	5.65	6.78	45#	002/BY01/A	Left Hand Door Assembly	154.05	184.86
14	012/BY33	Mover Bar	37.30	44.76	46#	002/BY02/A	Right Hand Door Assembly	163.30	195.96
15	002/BY30	Carrier Bar	43.15	51.78	47#	001/BZ010	Firebox (Island IIZ)		
16	010/BY47	Throat Plate	64.25	77.10	48	012/TW09	Blanking Plate	18.75	22.50
17	012/AY13	Idler Rod	25.85	31.02	49	010/AY51	Clamping Plate	14.80	17.76
18	012/AY15	Riddler Rod	26.55	31.86	50#	002/CH12B	Flue Collar	55.40	66.48
19	004/BX17	Ashpan	62.10	74.52	51	008/NV38	Flue Fixing Rope Seal	5.70	6.84
20	002/BY07B	Front Firebar	47.35	56.82	52	012/BZE011	Serial No. Label		
21	002/BY08	Deepening Bar	39.50	47.40	53#	010/TW33	Vert. Rear Flue Connector (Opt'l Extra	86.00	103.20
22	004/AY78	Front Ash Shedding Plate	20.80	24.96	54*	010/BW51	Ash Carrier (Optional Extra)	84.00	100.80
23	008/KV16	R.H. Door Handle	17.00	20.40	55*	010/BY83	Smoke Reducing Kit	34.00	40.80
24	002/AY14	Door Catch Cam	7.90	9.48	56	010/TH63	External Air Manifold Kit	88.50	106.20
25	008/FFW015	M12 Double Coil Spring Washer	1.55	1.86	57#	005/BX093L	LH Curved Panel (Optional)	36.05	43.26
26	004/ST008	Tabbed Locking Washer	1.02	1.22	58#	005/BX093R	RH Curved Panel (Optional)	36.05	43.26
27	008/FFN001	M12 Half Nut	0.15	0.18	59	010/AX096	Panel Fixing Bracket	1.30	1.56
28	008/KV13	L.H. Door Knob	2.65	3.18	60#	010/BX080	Heatshield (Opt'l Extra)	59.00	70.80
29	008/BW39/S	Hinge Pin Set	2.80	3.36	61#	010/BY12S	Set of Low Legs (4)	55.00	66.00
30	002/PY24	Hinge Post	12.75	15.30	62#	010/BY13S	Set of High Legs (4)	65.00	78.00
31	008/AY37	Air Control Knob	3.70	4.44	63#	010/BY87	Store Stand	169.00	202.80
32	008/PX95	Riddling/ Ashpan Tool	26.45	31.74					

* These items are not shown on the drawing.

Please specify colour when ordering.

Prices are shown in pounds sterling with vat at 20%

They are correct at the date shown but may be subject to change without notice. E. & O.E

These prices are subject to a carriage charge.

To obtain spare parts please contact your local stockist giving Model, Part No. and Description. In case of difficulty contact the manufacturer at the address shown.

This drawing is for identification purposes only.

