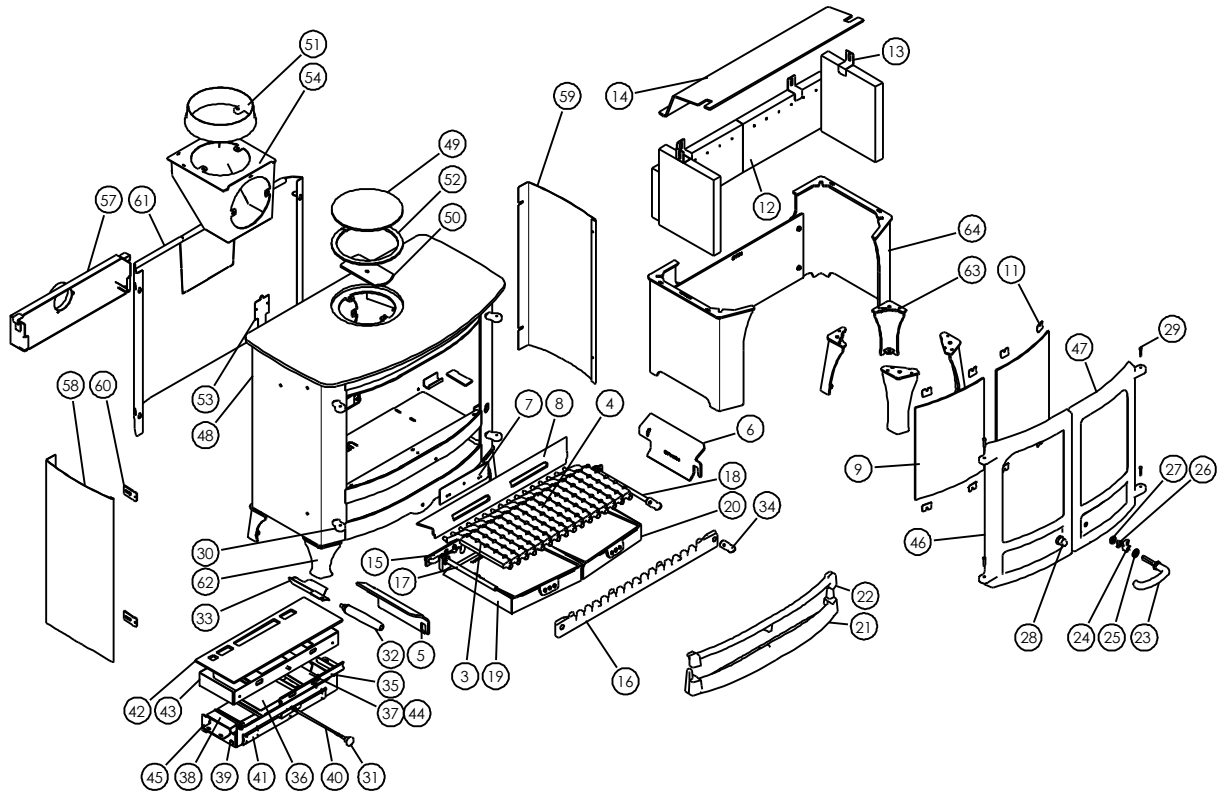




Issue A



Item	Part No.	Description	Ex.Vat.	Inc.Vat.	Item	Part No.	Description	Ex.Vat.	Inc.Vat.
1*	008/CY40S	Door Seal Set Inc. Adhesive .....	23.05	27.66	33	004/BX048	Tool Holder .....	18.00	21.60
2*	008/FW29	Door Seal Adhesive .....	8.50	10.20	34	002/PX89	Riddler Knob .....	27.20	32.64
3	002/CG20	Individual Grate Bar .....	13.05	15.66	35	004/CY21	Air Bypass Slide .....	16.45	19.74
4	002/CG20S16	Set of Grate Bars (16) .....	163.95	196.74	36	004/CY22P	Primary Air Inlet Flap .....	17.55	21.06
5	010/CY14L	Side Fire Plate L.H. ....	29.25	35.10	37	004/CY22S	Secondary Air Inlet Flap .....	17.00	20.40
6	010/CY14R	Side Fire Plate R.H. ....	29.25	35.10	38	004/AY22-1S	Secondary/Bypass Air Inlet Flap .....	16.45	19.74
7	004/CZE081	Undergrate Blanking Plate .....	12.05	14.46	39	004/CY24	Flap Mounting Rod (Inc. Fixings) .....	8.50	10.20
8	010/CY16	Back Fire Plate .....	51.35	61.62	40	004/CY32	Air Control Rod .....	11.50	13.80
9	006/CY18	Glass (Inc Seal) .....	73.30	87.96	41	004/CY23	Actuator Assembly .....	40.00	48.00
10*	008/CY41	Glass Seal .....	10.20	12.24	42	008/CY39	Upper Quattro Box Gasket .....	17.20	20.64
11	004/KV23	Glass Retainer .....	0.52	0.62	43	010/CY20	Upper Quattro Box .....	61.65	73.98
12	011/CZE129S	Set of Fire Bricks .....	68.65	82.38	44	008/CY26S	Set of Air Inlet Flap Pads .....	16.00	19.20
13	004/XV30	Brick Retainer .....	5.65	6.78	45	010/CY19	Lower Quattro Box .....	40.25	48.30
14	010/CY31	Throat Plate .....	64.25	77.10	46#	002/CY01/A	Left Hand Door Assembly .....	178.45	214.14
15	012/CY33	Mover Bar .....	37.85	45.42	47#	002/CY02/A	Right Hand Door Assembly .....	187.45	224.94
16	002/CY30	Carrier Bar .....	55.05	66.06	48#	001/CZ010	Firebox (Island IIIZ) .....		
17	012/AY13	Idler Rod .....	25.85	31.02	49	010/CY37	Blanking Plate .....	18.75	22.50
18	012/AY15	Riddler Rod .....	26.55	31.86	50	010/CY61	Clamping Plate .....	14.80	17.76
19	004/CX17L	Ashpan L.H. ....	47.40	56.88	51	002/CY45	Flue Collar .....	58.20	69.84
20	004/CX17R	Ashpan R.H. ....	47.40	56.88	52	008/CY38	Flue Fixing Rope Seal .....	5.70	6.84
21	002/CY07C	Front Firebar .....	70.65	84.78	53	012/CZE011	Serial No. Label .....		
22	002/CY08C	Deepening Bar .....	49.75	59.70	54#	010/CY34	Vert. Rear Flue Connector (Opt'l Extra) .....	94.00	112.80
23	008/KV16	R.H. Door Handle .....	17.00	20.40	55*	010/BW51	Ash Carrier (Optional Extra) .....	84.00	100.80
24	002/AY14	Door Catch Cam .....	7.90	9.48	56*	010/CY83	Smoke Reducing Kit .....	34.00	40.80
25	008/FFW015	M12 Double Coil Spring Washer .....	1.55	1.86	57	010/TH64	External Air Manifold Kit .....	88.50	106.20
26	004/ST008	Tabbed Locking Washer .....	1.02	1.22	58#	005/CX093R	RH Curved Panel (Opt'l Extra) .....	36.05	43.26
27	008/FFN001	M12 Half Nut .....	0.15	0.18	58#	005/CX093L	LH Curved Panel (Opt'l Extra) .....	36.05	43.26
28	008/KV13	L.H. Door Knob .....	2.65	3.18	60	010/AX096	Panel Fixing Bracket .....	1.30	1.56
29	008/BW39/S	Hinge Pin Set .....	2.80	3.36	61#	010/CX080	Heatshield (Opt'l Extra) .....	62.00	74.40
30	002/PY24	Hinge Post .....	12.75	15.30	62#	010/CY12S	Set of Low Legs (4) .....	55.00	66.00
31	008/AY37	Air Control Knob .....	3.70	4.44	63#	010/CY64S	Set of High Legs (4) .....	65.00	78.00
32	008/PX95	Riddling/ Ashpan Tool .....	26.45	31.74	64#	010/CY87	Store Stand .....	162.50	195.00

\* These items are not shown on the drawing.  
 # Please specify colour when ordering.  
 Prices are shown in pounds sterling with vat at 20%  
 They are correct at the date shown but may be subject to change without notice. E. & O.E  
 These prices are subject to a carriage charge.

To obtain spare parts please contact your local stockist giving Model, Part No. and Description. In case of difficulty contact the manufacturer at the address shown.  
 This drawing is for identification purposes only.

