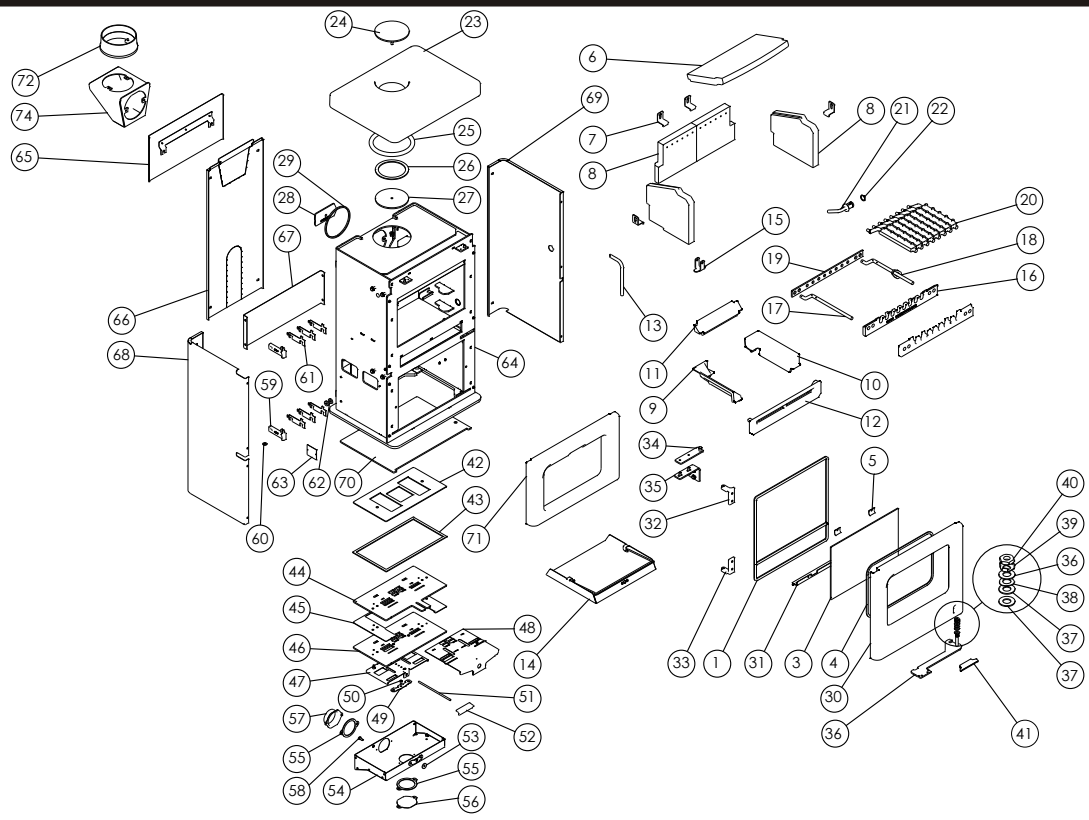




Issue C



Item	Part No.	Description	Ex.Vat.	Inc.Vat.	Item	Part No.	Description	Ex.Vat.	Inc.Vat.
1	008/BU002/S	Rope Door Seal Inc Adhesive	30.00	36.00	38	008/FFW027	M10 Wavy Washer	1.16	1.39
2*	008/FW29	Door Seal Adhesive	11.20	13.44	39	010/BU061	Tabbed Locking Washer	1.70	2.04
3	006/BU018	Glass	53.00	63.60	40	008/FFN019	M10 Half Nut	1.46	1.75
4	008/BU003	Glass Seal	7.05	8.46	41	008/BU049	Door Handle	8.40	10.08
5	004/KV23	Glass Retainer	0.70	0.84	42	008/BU110	Air Control Gasket	10.20	12.24
6	011/BU031	Brick Throat Plate	40.00	48.00	43	008/EZ006	Airbox Gasket	11.90	14.28
7	004/XV30	Brick Bracket	7.45	8.94	44	010/BU111	Air Control Top Slider Plate	19.40	23.28
8	011/BU029S	Set of Firebricks	82.00	98.40	45	004/BU112	Wood/Multifuel Surround Plate	16.20	19.44
9	002/BU015L	LH Side Fire Plate	41.50	49.80	46	010/BU130	Air Control Lower Plate	19.40	23.28
10	002/BU015R	RH Side Fireplate	41.50	49.80	47	004/BU115	Air Control Slider	10.60	12.72
11	002/BU016	Back Fireplate	36.00	43.20	48	004/BU113	Wood/Multifuel Selection Slide	27.00	32.40
12	002/BU007	Front Fence	45.00	54.00	49	004/BR015	Clicker Retainer Plate	3.55	4.26
13	004/EZ095	Ashpan/Riddling Tool	24.00	28.80	50	008/ES36/01	Brass Ball Catch	4.55	5.46
14	004/BU017	Ashpan	27.00	32.40	51	004/ER016	Control Rod	2.20	2.64
15	010/BU097	Carrier Bar Clamping Bracket	9.10	10.92	52	008/BU037	Air Control Handle	11.20	13.44
16	002/BU030	Carrier Bar	42.50	51.00	53	008/BR052	Felt Washer	1.14	1.37
17	012/AY13	Idler Rod	34.50	41.40	54	004/BU120	Air Box Cover	42.00	50.40
18	010/BU077	Riddler Rod Assembly	36.00	43.20	55	008/BR044	Duct Gasket	10.60	12.72
19	010/BU033	Mover Bar	24.00	28.80	56	004/BR054	Blanking Plate	9.85	11.82
20	002/CG20S8	Set of Grate Bars (8)	108.00	129.60	57	004/BR053	Air Inlet Spigot	26.00	31.20
21	002/BU098	Riddler Spigot	29.00	34.80	58	008/FFS067	Defra Stop	0.66	0.79
22	008/FFM081	Circlip	1.58	1.90	59	002/BU040	Door Hinge Bracket	21.50	25.80
23#	002/BU009	Cast Top	85.00	102.00	60	008/FFW024	M8 Brass Washer	0.66	0.79
24	010/BU012	Blanking Plate	24.00	28.80	61	004/BU039	Door Hinge Shim	7.15	8.58
25	008/BU004	Flue Fixing Rope Seal	6.55	7.86	62	010/DY24	Spacer	1.58	1.90
26	008/KS134	Blanking Plate Seal	3.80	4.56	63	012/BU011	Serial No. Label		
27	010/BU019	Blanking Plate Retainer	9.10	10.92	64#	001/BU010	Firebox		
28	010/EY51	Clamping Plate	19.20	23.04	65#	005/BU081	Rear Heatshield	42.00	50.40
29#	010/BU013	Top Flue Trim Ring	9.10	10.92	66#	005/BU080	Rear Panel	53.50	64.20
30#	003/BU001A	Door Casting	184.00	220.80	67#	004/BU059	Rear Lower Panel	24.00	28.80
31	004/BU050	Rope Seal Channel	14.10	16.92	68#	005/BU093L	Left Side Panel	63.00	75.60
32	002/BU041	Upper Hinge	27.00	32.40	69#	005/BU093R	Right Side Panel	63.00	75.60
33	002/BU042	Lower Hinge	27.00	32.40	70#	010/BU058	Base Plate	33.00	39.60
34	010/BU063	Door Latch	15.00	18.00	71#	002/BU072	Front Casting	72.00	86.40
35	010/BU064	Door Latch Bracket	10.50	12.60	72#	002/PV12B	Flue Collar	56.50	67.80
36#	010/BU060	Door Catch Arm	24.00	28.80	73	010/EW51	Ash Carrier (Optional Extra)	122.00	146.40
37	008/FFW029	M10 Brass Washer	0.30	0.36	74#	010/BU034	Vertical Rear Flue Adapter (Opt'l Extra)	122.00	146.40

*These items are not shown on the drawing.
 # Please specify colour when ordering. Prices are shown in pounds sterling with vat at 20% They are correct at the date shown but may be subject to change without notice. E. & O.E These prices are subject to a carriage charge.

To obtain spare parts please contact your local stockist giving Model, Part No. and Description. In case of difficulty contact the manufacturer at the address shown. This drawing is for identification purposes only.

