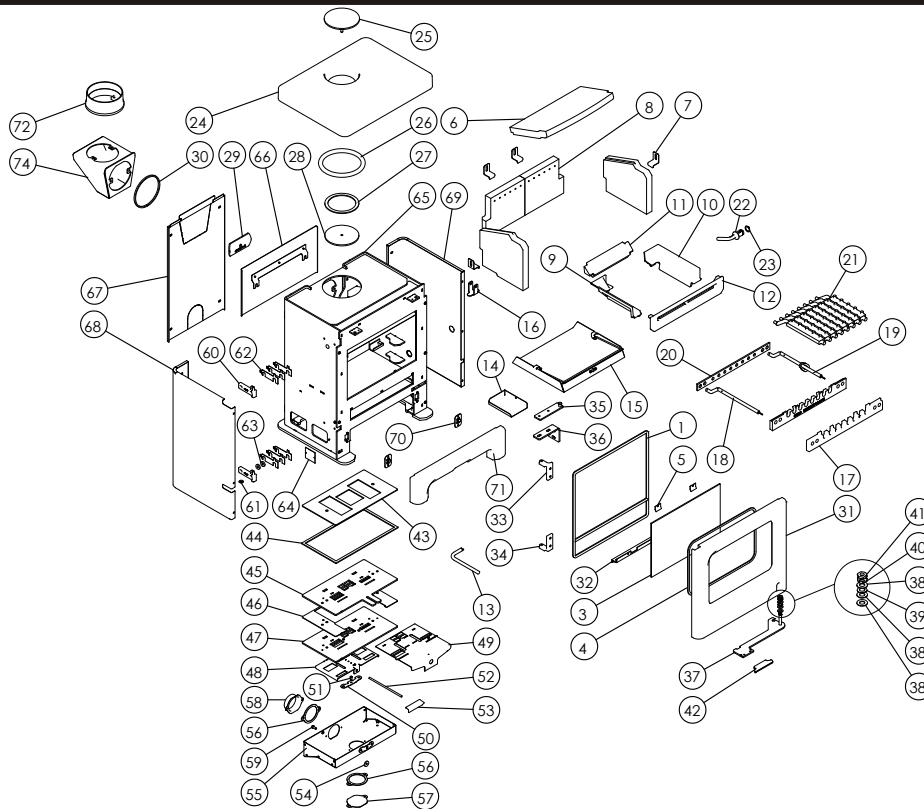




Issue B



Item	Part No.	Description	Ex.Vat.	Inc.Vat.	Item	Part No.	Description	Ex.Vat.	Inc.Vat.
1	008/BU002/S	Rope Door Seal Inc Adhesive .....	24.50	29.40	38	008/FFW029	M10 Brass Washer .....	0.30	0.36
2*	008/FW29	Door Seal Adhesive .....	9.10	10.92	39	008/FFW027	M10 Wavy Washer .....	0.95	1.14
3	006/BU018	Glass .....	43.50	52.20	40	010/BU061	Tabbed Locking Washer .....	1.40	1.68
4	008/BU003	Glass Seal .....	5.80	6.96	41	008/FFN019	M10 Half Nut .....	1.20	1.44
5	004/KV23	Glass Retainer .....	0.57	0.68	42	008/BU049	Door Handle .....	6.90	8.28
6	011/BU031	Brick Throat Plate .....	32.50	39.00	43	008/BU110	Air Control Gasket .....	8.40	10.08
7	004/XV30	Brick Bracket .....	6.10	7.32	44	008/EZ006	Airbox Gasket .....	9.80	11.76
8	011/BU029S	Set of Firebricks .....	67.00	80.40	45	010/BU111	Air Control Top Slider Plate .....	16.00	19.20
9	002/BU015L	LH Side Fire Plate .....	34.00	40.80	46	004/BU112	Wood/Multifuel Surround Plate .....	13.30	15.96
10	002/BU015R	RH Side Fireplate .....	34.00	40.80	47	010/BU130	Air Control Lower Plate .....	16.00	19.20
11	002/BU016	Back Fireplate .....	29.50	35.40	48	004/BU115	Air Control Slider .....	8.70	10.44
12	002/BU007	Front Fence .....	36.50	43.80	49	004/BU113	Wood/Multifuel Selection Slide .....	22.00	26.40
13	004/EZ095	Ashpan/Riddling Tool .....	19.20	23.04	50	004/BR015	Clicker Retainer Plate .....	2.90	3.48
14	004/BUL048	Ashpan/Riddling Tool Holder .....	9.10	10.92	51	008/ES36/01	Brass Ball Catch .....	3.70	4.44
15	004/BU017	Ashpan .....	22.00	26.40	52	004/ER016	Control Rod .....	1.80	2.16
16	010/BU097	Carrier Bar Clamping Bracket .....	7.50	9.00	53	008/BU037	Air Control Handle .....	9.10	10.92
17	002/BU030	Carrier Bar .....	35.00	42.00	54	008/BR052	Felt Washer .....	0.93	1.12
18	012/AY13	Idle Rod .....	28.00	33.60	55	004/BU120	Air Box Cover .....	34.50	41.40
19	010/BU077	Riddler Rod Assembly .....	29.50	35.40	56	008/BR044	Duct Gasket .....	8.70	10.44
20	010/BU033	Mover Bar .....	19.20	23.04	57	004/BR054	Blanking Plate .....	8.10	9.72
21	002/CG20S8	Set of Grate Bars (8) .....	88.00	105.60	58	004/BR053	Air Inlet Spigot .....	21.00	25.20
22	002/BU098	Riddler Spigot .....	23.50	28.20	59	008/FFS067	Defra Stop .....	0.54	0.65
23	008/FFM081	Circlip .....	1.30	1.56	60	002/BU040	Door Hinge Bracket .....	17.50	21.00
24#	002/BU009	Cast Top .....	70.00	84.00	61	008/FFW024	M8 Brass Washer .....	0.54	0.65
25	010/BU012	Blanking Plate .....	19.30	23.16	62	004/BU039	Door Hinge Shim .....	5.90	7.08
26	008/BU004	Flue Fixing Rope Seal .....	5.40	6.48	63	010/DY24	Spacer .....	1.30	1.56
27	008/KS134	Blanking Plate Seal .....	3.10	3.72	64	012/BUL011	Serial No. Label		
28	010/BU019	Blanking Plate Retainer .....	7.50	9.00	65#	001/BUL010	Firebox		
29	010/EY51	Clamping Plate .....	15.80	18.96	66#	005/BU081	Rear Heatshield .....	34.50	41.40
30#	010/BU013	Top Flue Trim Ring .....	7.50	9.00	67#	005/BUL080	Rear Panel .....	41.50	49.80
31#	003/BU001A	Door Casting .....	150.00	180.00	68#	005/BUL093L	Left Side Panel .....	41.50	49.80
32	004/BU050	Rope Seal Channel .....	11.60	13.92	69#	005/BUL093R	Right Side Panel .....	41.50	49.80
33	002/BU041	Upper Hinge .....	22.00	26.40	70	004/BUL089	Front Casting Reciever .....	4.80	5.76
34	002/BU042	Lower Hinge .....	22.00	26.40	71#	002/BUL071	Front Casting .....	56.00	67.20
35	010/BU063	Door Latch .....	12.30	14.76	72#	002/PV12B	Flue Collar .....	46.00	55.20
36	010/BU064	Door Latch Bracket .....	8.60	10.32	73	010/EW51	Ash Carrier (Optional Extra) .....	92.00	110.40
37#	010/BU060	Door Catch Arm .....	19.20	23.04	74#	010/BU034	Vertical Rear Flue Adapter (Opt'l Extra)	92.00	110.40

\*These items are not shown on the drawing.

# Please specify colour when ordering.

Prices are shown in pounds sterling with vat at 20%

They are correct at the date shown but may be subject to change without notice. E. & O.E

These prices are subject to a carriage charge.

To obtain spare parts please contact your local stockist giving Model, Part No. and Description. In case of difficulty contact the manufacturer at the address shown.

This drawing is for identification purposes only.

