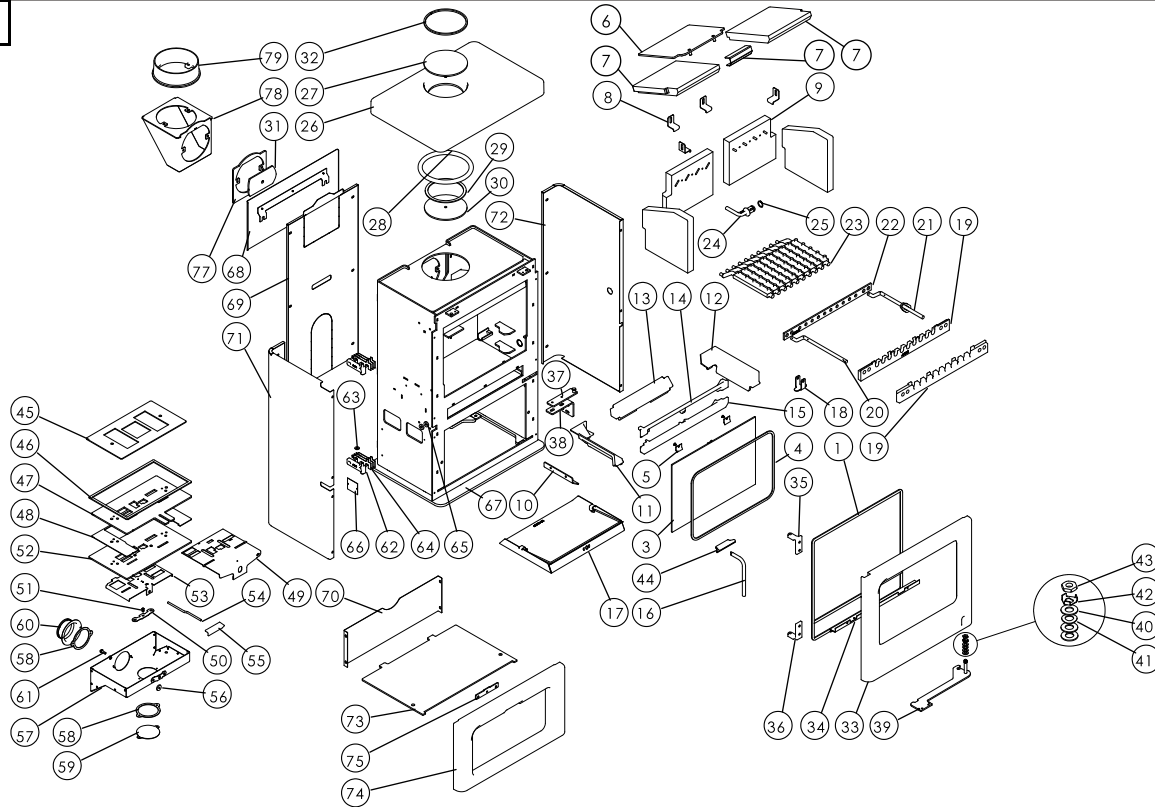




Issue C



Item	Part No.	Description	Ex.Vat.	Inc.Vat.	Item	Part No.	Description	Ex.Vat.	Inc.Vat.
1	008/AU0355	Rope Door Seal Inc Adhesive	30.50	36.60	41	008/FFW027	M10 Wavy Washer	1.16	1.39
2*	008/FW29	Door Seal Adhesive	11.20	13.44	42	010/BU061	Tabbed Locking Washer	1.70	2.04
3	006/AU018	Glass	65.00	78.00	43	008/FFN019	M10 Half Nut	1.46	1.75
4	008/EW45	Glass Seal	13.40	16.08	44	008/BU049	Door Handle	8.40	10.08
5	004/KV23	Glass Retainer	0.70	0.84	45	008/BU110	Air Control Gasket	10.20	12.24
6	010/AU032	Upper Throat Plate	28.50	34.20	46	008/KZ006	Air Box Gasket	11.80	14.16
7	011/AU031S	Set of Throat Plate Bricks Inc. Bracket ..	47.00	56.40	47	010/AU111	Air Control Top Slider Plate	30.50	36.60
8	004/XV30	Brick Bracket	7.45	8.94	48	004/AU112	Undergrate Slider Spacer	9.25	11.10
9	011/AU029S	Set of Firebricks	69.00	82.80	49	004/AU113	Multifuel Selection Slider	31.50	37.80
10	010/AU019	Undergrate Deflector	9.70	11.64	50	004/BR015	Clicker Retainer Plate	3.55	4.26
11	002/BU015L	LH Side Fire Plate	41.50	49.80	51	008/ES36/01	Brass Ball Catch	4.55	5.46
12	002/BU015R	RH Side Fireplate	41.50	49.80	52	010/AU130	Air Control Lower Plate	31.50	37.80
13	002/AU016	Back Fireplate	33.00	39.60	53	004/AU115	Air Control Slider	11.90	14.28
14	002/AU008	Deepening Bar	35.00	42.00	54	004/AU013	Air Control Rod	11.90	14.28
15	002/AU007	Front Fence	40.00	48.00	55	008/BU037	Air Control Handle	11.20	13.44
16	004/EZ095	Ashpan/Riddling Tool	24.00	28.80	56	008/BR052	Felt Washer	1.14	1.37
17	004/AP017	Ashpan	48.00	57.60	57	004/KZ039	Air Box Cover	33.00	39.60
18	010/BU097	Carrier Bar Clamping Bracket	9.10	10.92	58	008/CR063	Duct Gasket	4.85	5.82
19	002/AY30	Carrier Bar	52.50	63.00	59	004/CR064	Blanking Plate	9.85	11.82
20	012/AY13	Idler Rod	34.50	41.40	60	010/CR048/S	Air Inlet Spigot	20.50	24.60
21	010/BU077	Riddler Rod Assembly	36.00	43.20	61	008/FFS067	Defra Stop	0.66	0.79
22	010/AU033	Mover Bar	42.00	50.40	62	002/BU040	Door Hinge Bracket	21.50	25.80
23	002/CG20S10	Set of Grate Bars (10)	138.00	165.60	63	008/FFW024	M8 Brass Washer	0.66	0.79
24	002/BU098	Riddler Spigot	29.00	34.80	64	004/BU039	Door Hinge Shim	7.15	8.58
25	008/FFM081	Circlip	1.58	1.90	65	010/DY24	Spacer	1.58	1.90
26#	003/AU009	Cast Top	138.00	165.60	66	012/AU011	Serial No. Label		
27	010/KZ132	Blanking Plate	26.00	31.20	67#	001/AU010	Firebox		
28	008/KZ136	Flue Fixing Rope Seal	9.10	10.92	68#	005/AU081	Rear Heatshield	42.00	50.40
29	008/KS134	Blanking Plate Seal	3.80	4.56	69#	005/AU080	Rear Panel	45.50	54.60
30	010/KZ133	Blanking Plate Retainer	15.00	18.00	70#	005/AU059	Rear Lower Panel	33.00	39.60
31	010/AY51	Clamping Plate	19.20	23.04	71#	005/AU093L	Left Side Panel	54.50	65.40
32#	010/KZ131	Top Flue Trim Ring	15.60	18.72	72#	005/AU093R	Right Side Panel	54.50	65.40
33#	003/AU001A	Door Casting	275.00	330.00	73#	010/AU058	Base Plate	39.50	47.40
34	004/AU050	Rope Seal Channel	19.70	23.64	74#	003/AU072	Front Casting	48.50	58.20
35	002/BU041	Upper Hinge	27.00	32.40	75	010/AU014	Air Control Rod Guide	7.15	8.58
36	002/BU042	Lower Hinge	27.00	32.40	76	010/EW51	Ash Carrier (Optional Extra)	122.00	146.40
37	010/BU063	Door Latch	15.00	18.00	77#	010/AU021	Vertical Rear Flue Adapter Spacer	9.70	11.64
38	010/BU064	Door Latch Bracket	10.50	12.60	78#	010/TW33	Vertical Rear Flue Adapter (Opt'l Extra) ..	122.00	146.40
39#	010/AU060	Door Catch Arm	33.00	39.60	79	002/CH12B	Flue Collar	73.00	87.60
40	008/FFW029	M10 Brass Washer	0.30	0.36					

*These items are not shown on the drawing.

Please specify colour when ordering. Prices are shown in pounds sterling with vat at 20% They are correct at the date shown but may be subject to change without notice. E. & O.E These prices are subject to a carriage charge.

To obtain spare parts please contact your local stockist giving Model, Part No. and Description. In case of difficulty contact the manufacturer at the address shown. This drawing is for identification purposes only.

