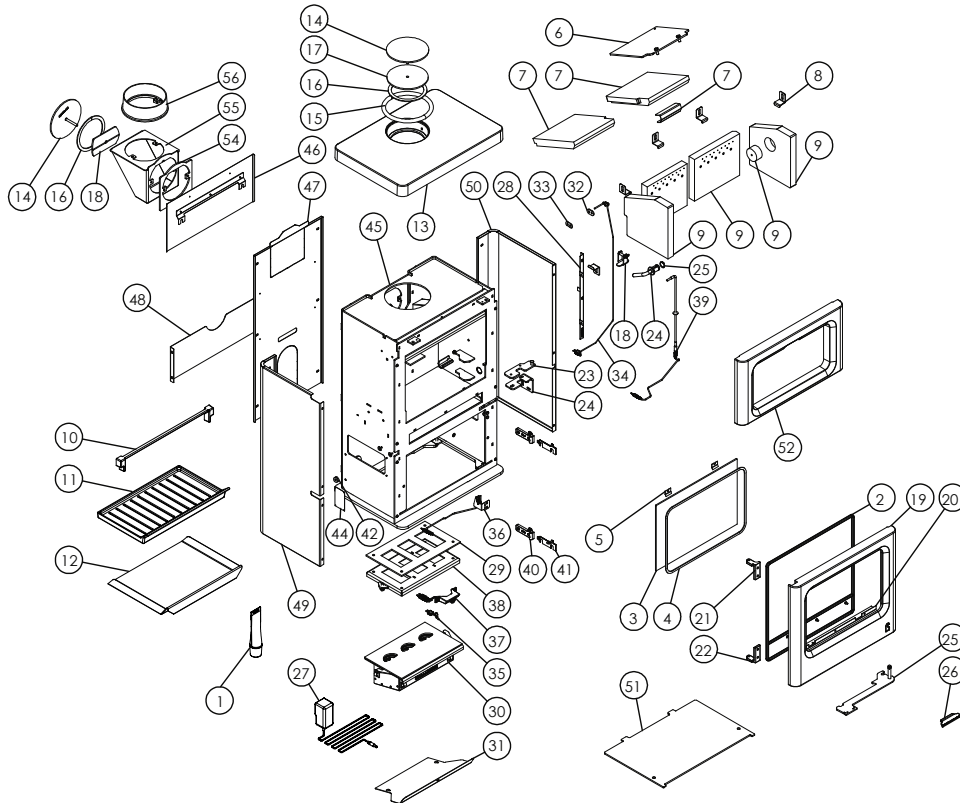


Charnwood Skye E700 D Store Stand Parts List



Issue A



Item	Part No.	Description	Item	Part No.	Description
1	008/FW29	Door Seal Adhesive	30	010/CU135	Air Control Assembly
2	008/AU0355	Rope Door Seal Inc Adhesive	31	008/CU043	Cable Tray With Grommet
3	006/AU018	Glass	32	008/NH700	Thermocouple Retainer
4	008/EV45	Glass Seal	33	008/NH701	Thermocouple Retainer
5	004/KV23	Glass Retainer	34	008/CU260	Firebox Thermocouple
6	010/DU032	Upper Throat Plate	35	008/CU261	Room Thermocouple
7	011/AU031S	Set of Throat Plate Bricks Inc. Bracket	36	008/CU066	Switch and Bracket
8	004/XV30	Brick Bracket	37	008/CU250	Manual Control Button
9	011/DU029S	Set of Firebricks	38	010/CU232	Airbox Upper With
10	003/DU008	Deepening Bar	39	008/CU160	Glass Rod Assembly
11	003/DU022	Grate	40	002/BU040	Door Hinge Bracket
12	004/DU017	Ashpan	41	004/BU039	Door Hinge Shim
13#	003/CU006	Cast Top	42	010/DY24	Spacer
14	010/KZ132	Blanking Plate	43*	012/DU012	Compliance Label
15	008/KZ136	Flue Fixing Rope Seal	44	012/DU011	Serial No. Label
16	008/KS134	Blanking Plate Seal	45#	001/DU010	Firebox
17	010/KZ133	Blanking Plate Retainer	46#	005/AU081	Rear Heatshield
18	010/AY51	Clamping Plate	47#	005/AU080	Rear Panel
19#	003/CU001A	Door Casting	48#	005/AU059	Rear Lower Panel
20	004/AU050	Rope Seal Channel	49#	005/AU093L	Left Side Panel
21	002/BU041	Upper Hinge	50#	005/DU093R	Right Side Panel
22	002/BU042	Lower Hinge	51#	010/AU058	Base Plate
23	010/CU063	Door Latch	52#	003/CU072	Front Casting
24	010/CU064	Door Latch Bracket	53*	010/EW51	Ash Carrier (Optional Extra)
25#	010/CU060	Door Catch Arm	54	010/AU021	Vertical Rear Flue Adapter Spacer
26	008/BU049	Door Handle	55#	010/TW33	Vertical Rear Flue Adapter (Opt'l Extra)
27	008/EL307	9V Power Supply	56#	002/CH12B	Flue Collar
28	008/CU161	Light Optic Guard	57*	010/EL308	DC Power Extension Lead
29	008/CU109	Air Control Gasket			

*These items are not shown on the drawing.
Please specify colour when ordering.

To obtain spare parts please contact your local stockist giving Model, Part No. and Description. In case of difficulty contact the manufacturer at the address shown. This drawing is for identification purposes only.

