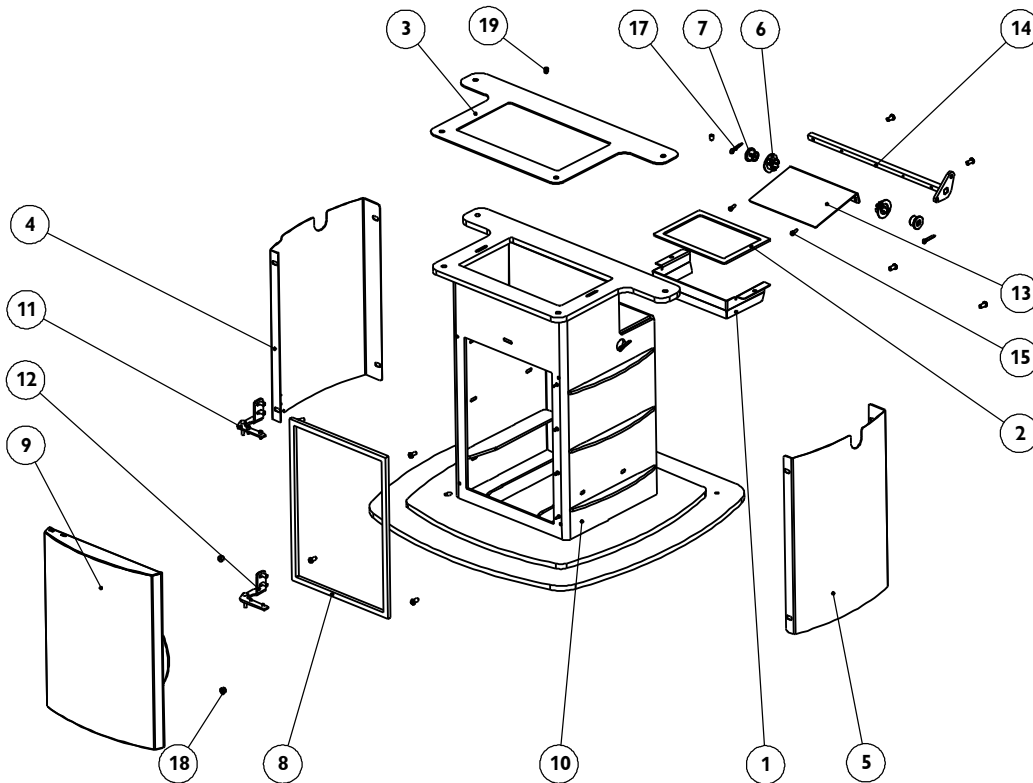




Issue C



Item	Part No.	Description	Ex.Vat.	Inc.Vat.	Item	Part No.	Description	Ex.Vat.	Inc.Vat.
1	004/ES06/12	Ash Guide	5.80	6.96	11	010/ES06/26	Hinge Upper	11.10	13.32
2	008/ES06/16	Gasket Ash Flap	12.30	14.76	12	010/ES06/27	Hinge Lower	11.10	13.32
3	008/ES06/17	Gasket Column	11.70	14.04	13	004/ES08/08	Ash Flap	8.80	10.56
4	004/ES06/19	L.H. Column Side	24.00	28.80	14	010/ES08/11	Flap Pivot Arm Assy	15.10	18.12
5	004/ES06/20	R.H. Column Side	24.00	28.80	15	008/FFS040	M4 x 10 Pozi Pan Hd	0.10	0.12
6	008/ES06/21	Bearing Ash Flap	3.20	3.84	16	008/FFS003	M5 x 10 Pan Hd	0.20	0.24
7	008/ES06/22	Flap Pivot	3.20	3.84	17	008/FFP001	Splitpin 3.7mm Dia	0.10	0.12
8	008/ES06/23	Ash Door Seal	3.50	4.20	18	008/FFM041	Magnet	1.80	2.16
9	004/ES06/10	Ash Door Assy	35.50	42.60	19	008/FFS068	Grubscrew M8 x 10	0.74	0.89
10	010/ES06/25	Column Body	300.00	360.00					

Please specify colour when ordering
 Prices are shown in pounds sterling with vat at 20%
 They are correct at the date shown but may be subject to change without notice. E. & O.E
 These prices are subject to a carriage charge.

To obtain spare parts please contact your local stockist giving Model, Part No. and Description. In case of difficulty contact the manufacturer at the address shown.
 This drawing is for identification purposes only.

