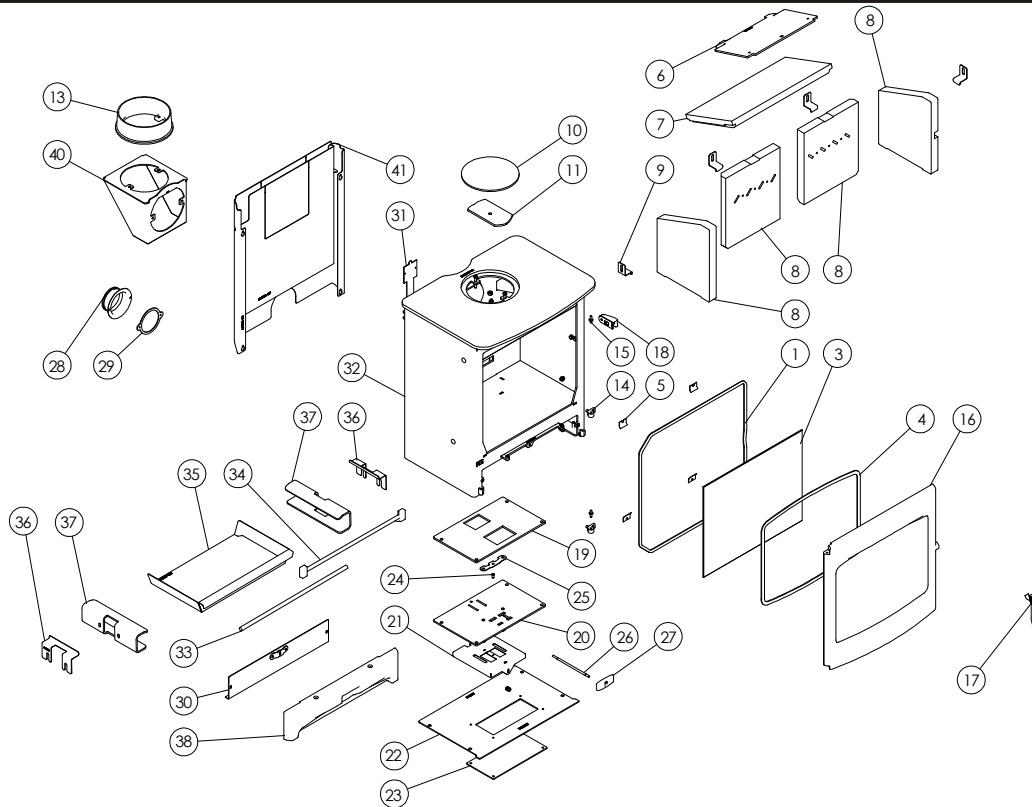




Issue B



Item	Part No.	Description	Ex.Vat.	Inc.Vat.	Item	Part No.	Description	Ex.Vat.	Inc.Vat.
1	008/AC035	Rope Door Seal (Inc Adhesive)	13.00	15.60	22	010/AC077	Base Cover Plate	18.00	21.60
2*	008/FW29	Door Seal Adhesive	9.10	10.92	23	010/AC078	Base Blanking Plate	12.00	14.40
3	006/AC018	Glass (Inc Seal)	51.00	61.20	24	008/ES36/01	Brass Ball Catch	3.70	4.44
4	008/AY45	Glass Seal	10.40	12.48	25	004/BR015	Clicker Retainer Plate	2.90	3.48
5	004/KV23	Glass Retainer	0.57	0.68	26	004/BR016	Control Rod	14.80	17.76
6	010/AC042	Upper Throat Plate	14.20	17.04	27	008/EZ105	Air Control Handle	9.10	10.92
7	011/AC031	Throat Plate	33.00	39.60	28	004/CR048	Air Inlet Spigot	10.80	12.96
8	011/AC028S	Set of Fire Bricks	60.50	72.60	29	008/CR063	Air Inlet Gasket	4.00	4.80
9	004/XV30	Brick Bracket	6.10	7.32	30	004/AC057	Airbox Cover	18.00	21.60
10	012/TW09	Blanking Plate	19.90	23.88	31	012/ACL011	Serial No. Label		
11	010/AY51	Clamping Plate	15.80	18.96	32#	001/ACL010	Firebox		
12#	008/NV38	Flue Fixing Rope Seal	6.20	7.44	33	010/AC007	Front Fence Bar	7.80	9.36
13#	002/CH12B	Flue Collar	59.50	71.40	34	002/AC008	Front Fence	27.00	32.40
14	002/BR020	Hinge	9.70	11.64	35	004/AC017	Ashpan	32.00	38.40
15	008/ST068/2	Hinge Pin Set	2.90	3.48	36	004/AB044	Brick Retainer	6.60	7.92
16#	003/AC001A	Door Assembly	165.00	198.00	37	010/AB016	Side Plate	22.00	26.40
17#	003/AB012A	Door Handle	35.00	42.00	38#	003/ACL002	Front Lower Casting	31.50	37.80
18#	003/AB055A	Latch Reciever	26.00	31.20	39*	010/EW51	Ash Carrier (Optional Extra)	92.00	110.40
19	008/AB110	Air Control Gasket	8.50	10.20	40#	010/TW33	Vert Rear Flue Adaptor (Opt'l Extra) ...	92.00	110.40
20	010/AC130	Air Control Plate	24.00	28.80	41#	010/AC080	Heat Shield (Optional Extra)	64.00	76.80
21	004/AC115	Slider	15.00	18.00					

*These items are not shown on the drawing.

Please specify colour when ordering.

Prices are shown in pounds sterling with vat at 20%

They are correct at the date shown but may be subject to change without notice. E. & O.E

These prices are subject to a carriage charge.

To obtain spare parts please contact your local stockist giving Model, Part No. and Description. In case of difficulty contact the manufacturer at the address shown.

This drawing is for identification purposes only.

